

# When Movement becomes Play.

Great fun without an external impulse –  
you still have to do your own climbing here!





# Berliner Seilfabrik

## Play equipment for life

This slogan means a lot to us! It defines how we work and construct playgrounds. In the almost 50 years in which we have been dealing with playground equipment we have built up an extensive product range with creative ideas and industry experts. We offer unforgettable, fascinating designs for all types of play, whether indoors or outdoors.



Berliner Seilfabrik GmbH & Co.  
Lengeder Straße 2/4  
13407 Berlin

T + 49 (0)30 41 47 24 - 0  
F + 49 (0)30 41 47 24 - 33

info@berliner-seilfabrik.com  
www.berliner-seilfabrik.com



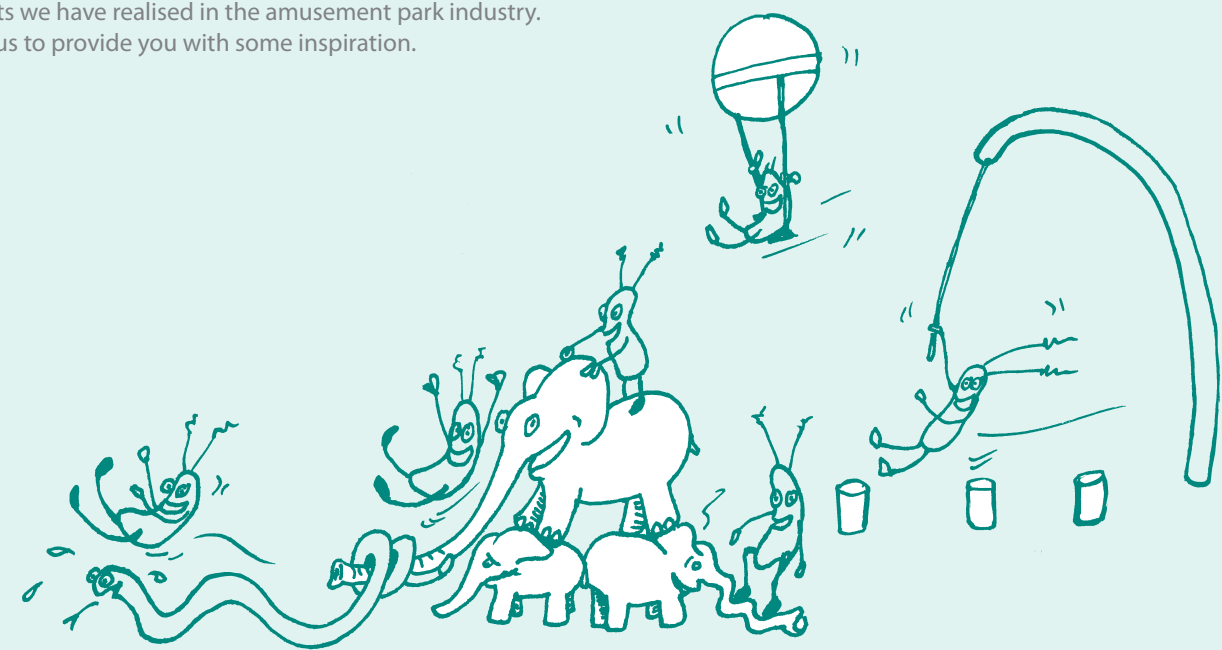
# This is where everything goes topsy-turvy!

Whether at breathtaking heights, in magical theme worlds or at stylish indoor playgrounds – we turn your guests' visit into a climbing experience. Whether as a counterbalance to a rollercoaster ride in an amusement park, as a theme world in a family park, jungle playground in the zoo or as an indoor highlight of your holiday park – tell us your ideas. We can help you turn them into a reality.

At our Creative Centre in Berlin, comprising more than ten architects, designers, landscape planners and engineers, we can create unique climbing landscapes for your leisure park. Thanks to the modular system of our devices, they can be combined in an infinite variety of ways. A wide range of attachment elements such as net tunnels, wobbly bridges, rapid tube slides or HDPE panels in individual themes make your climbing worlds truly special.

The highly interactive nature of themed worlds and adventure playgrounds featuring rope play equipment also encourages visitors to engage in physical activity. Climbing worlds are thus a great addition to the electric rides at leisure parks or the long walk around a zoo.

On the following pages we have compiled a selection of major projects we have realised in the amusement park industry. Allow us to provide you with some inspiration.





## The secret of the Balloon Városliget Budapest

“Liget Budapest” - that is the name of the largest and most ambitious urban culture development project so far in Europe, in which the symbolic and largest public park in Hungary’s capital was completely renovated. One of the most modern and varied playgrounds in Europe has been created on an area of 13,000 square metres in the south-eastern part of the park, which consists of a total of over 50 various play equipment. These are not only aimed at all different age groups, but also predominantly offer a high level of inclusive potential.

At the centre of this extraordinary playground, there is a hot-air balloon almost 12-meters in height, at the interior of which there is a huge spatial net. The ascent to the balloon’s basket takes place via rope ladders and climbing ropes, before the three-dimensional climbing net is accessed via ascent plateaus of varying heights. The famous painting “The Balloon” by the artist Pál Szinyei Merse from 1878 served as the model for the balloon design. It shows a hot-air balloon in the striking white-red striped colour combination, as it ascends from Városliget Budapest in the air. The new climbing balloon is thus not only an attractive playground equipment for the children in the park, but its appearance also creates a historical connection between the past and the present life in Városliget.





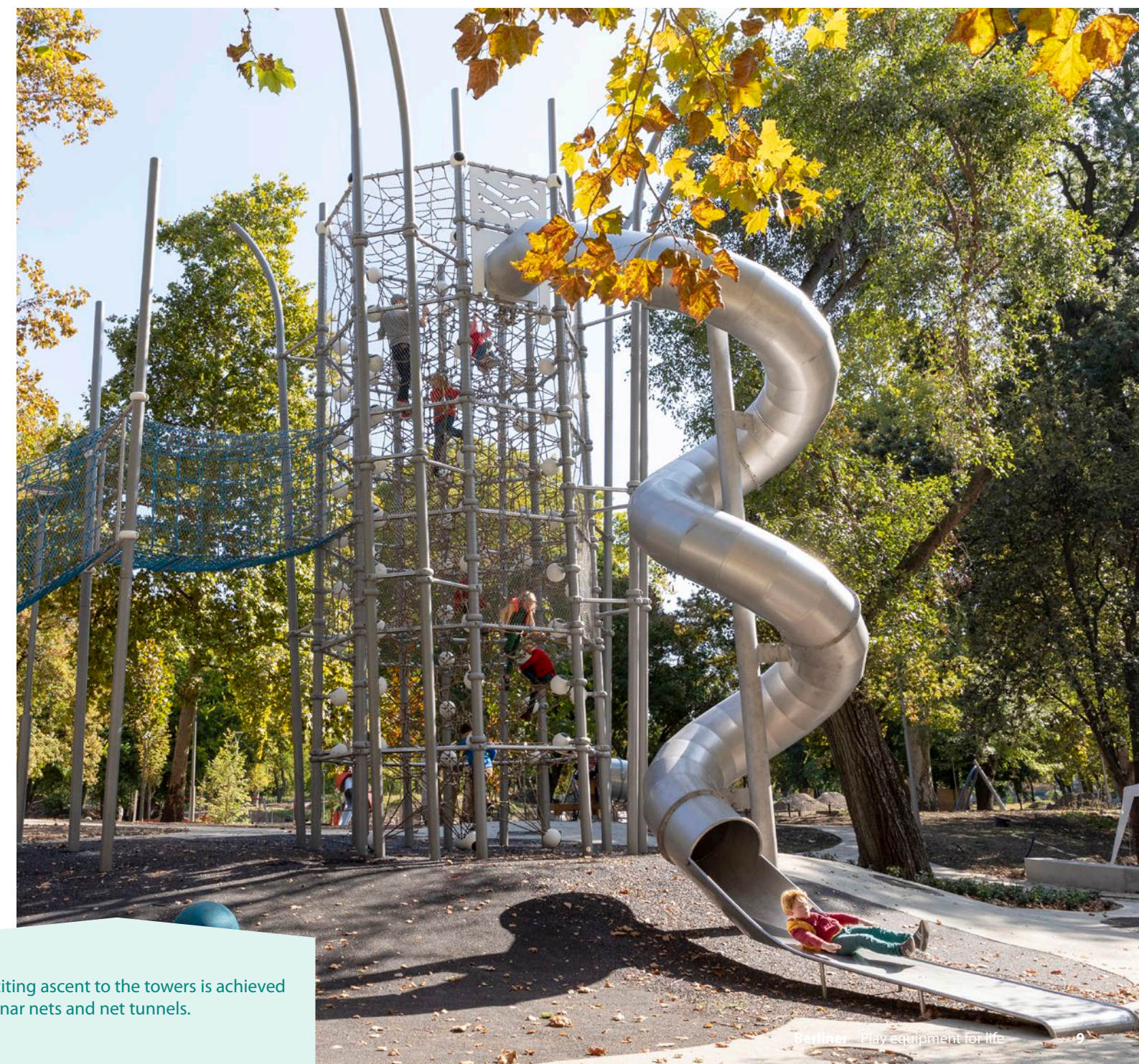
The main attraction of the new playground is the hot-air balloon with a large spatial net inside developed exclusively for the customer.



Beautiful details increase the play value and stimulate the imagination.



For those who really want to work out, the rubber cube invites you to play tag on several levels. At the same time, the rubber mats offer space for retreat and relaxation.



An exciting ascent to the towers is achieved via planar nets and net tunnels.





White Water's proper rapids offer plenty of space for sliding together.



For the little ones, Triitopia.04 offers climbing and sliding opportunities at a lower altitude.



## An incredible magic Valley – Barra Cadabra at Barra Shopping Sul Mall

"A world of which we didn't know if it really exists." That was the title of the design concept for the new adventure playground of the BarraShopping Sul Mall in Porto Alegre in Brazil. One highlight is the tree house settlement that includes three "Trii"-houses of the Berliner Greenville product range. However, the challenges for the young adventurers do not only lie in climbing up to the tree houses or through the net tunnel, but also in the adjacent low-rope course which consists of four climbing elements, each of which provides different levels of difficulty. Another special experience is provided by the three-dimensional net climber "Jupiter". It is here where many children can play simultaneously in three-dimensional space and in up to almost 5 metre height. Finally, the playground is rounded off by a Disk XL and a Side-by-Side Swing.

Fotos S.12-15: © www.oikotie.com.br







"Bravaria – The land of the Bold and Daring", offers a multifaceted athletic program of physical activities. Whoever dares can come here to enjoy climbing, sliding, spinning, swinging or jumping.





## Rusty adventure! **Karls Climbing Tower**

This gigantic climbing tower has been standing in Karls Erlebnis-Dorf in Elstal near Berlin since spring 2016. The tower is a record-breaking 13.2 meters high and equipped with a 130 m<sup>3</sup> three-dimensional net. Those who dare to climb up here can take the fast tunnel slide down as a reward. The connected network tunnel not only provides another exciting means of access to the spatial net, but also integrates the higher restaurant terrace. The climbing tower is completely designed in a rust-look to match the entire theme park. There is natural rust on the extra thick posts. A paint with metal particles was applied to the slide, underneath it is made of stainless steel.



Need for speed! The 17 metre long slide ensures a steep and fast descent.



Up, down or sideways – you can go any direction in the huge spatial net.

What a fabulous view! Whoever makes it to the top has the world at their feet.





## ...into the crystal matrix! **Swarovski's Play Tower**

The Swarovski Crystal Worlds are one of Austria's most popular tourist attractions. A landscaped park stretches over 7.5 hectares near the Swarovski headquarters in Wattens. In 2015, the adventure park was significantly expanded, with a total investment of 34 million euros. In addition to a crystalline park landscape, the focus is on the expansion of the offerings for families and children. Likewise in the play tower – a glass house over 4 floors. Various play activities open up on the 4 levels. These are connected by a unique, 14-metre high, three-dimensional climbing net. At 97 m<sup>3</sup>, it is the largest game structure in the tower and extends over all floors. It is built directly into the building and is the largest spatial net to ever be installed indoors.





Where to hold on next? – Three-dimensional thinking is required in the almost endlessly towering, crystalline structure.



Stylishly and above all precisely fitted into the building to ensure maximum safety and durability.





## Up to new heights! **Outdoor Play Plaza at the Greensboro Children's Museum**

With the redesign of its „Outdoor Play Plaza“, the Greensboro Children's Museum (GCM) in North Carolina, USA, expanded its offer under the motto „Reaching Greater Heights“. A breathtaking adventure park was the result. The playground was not only to be a collection of swings, slides and carousels, but a real attraction in the style of a theme park. For the first time, two of the nine-metre high spatial net structures „Neptun XXL“ from the Berliner Seilfabrik portfolio were installed next to each other and their uppermost points connected by a net tunnel. More than 3,500 meters of rope create space for up to 500 children to climb at once. 500 metres of galvanised and powder-coated steel tubing holds it all together.

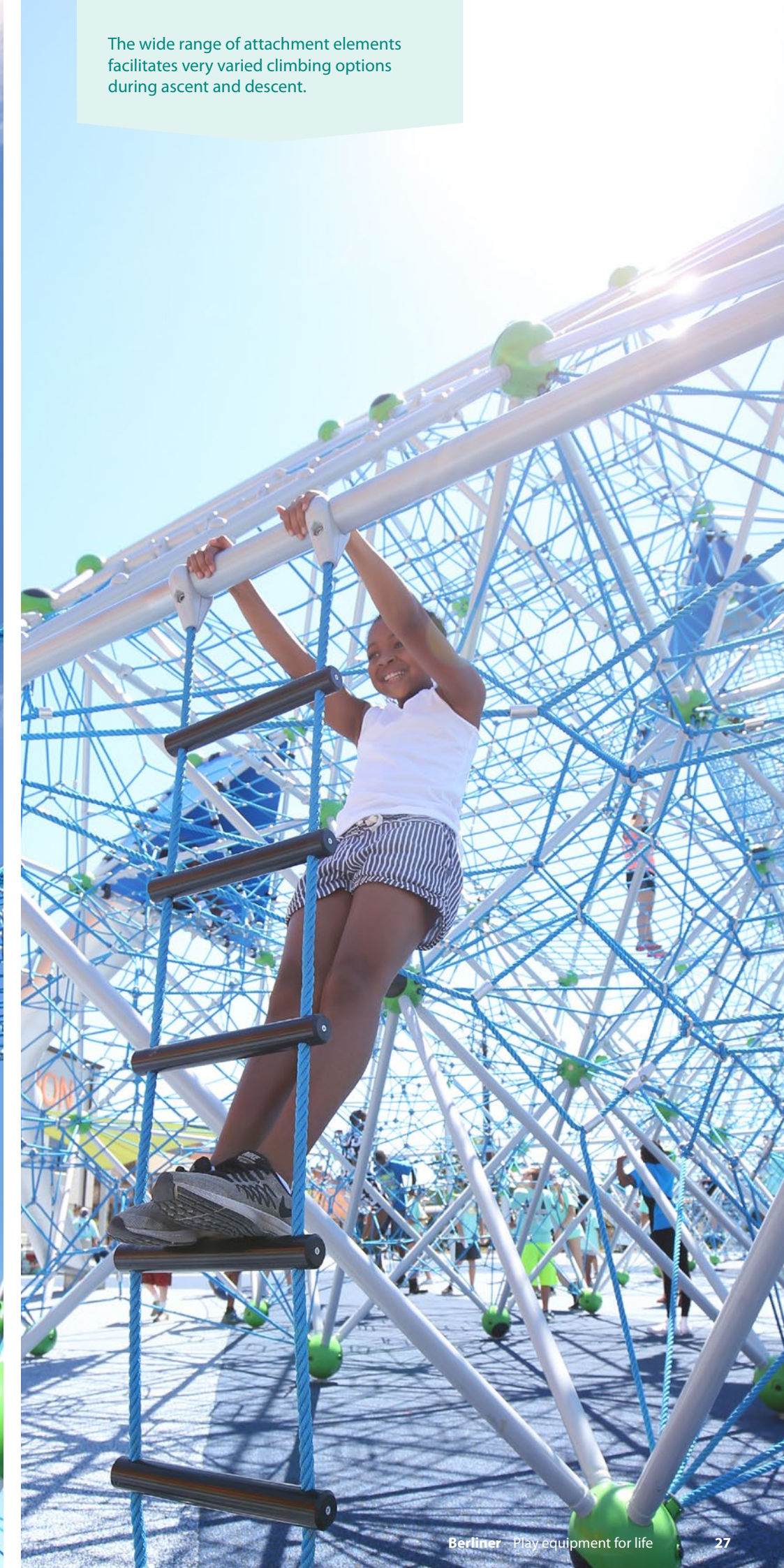




A net tunnel 9 metres up in the air and 9 metres long adds a new dimension of excitement to the game!



The wide range of attachment elements facilitates very varied climbing options during ascent and descent.





## One-of-a-kind play experience at **Denver Dynamic Play Park**

Dynamic Play Park at the brand-new Denver Premium Outlets in Thornton, Colorado is the talk of the metro, and features grassy foothills with a two metre embankment slide and custom netscape, aerial pathways connecting three Trii houses to a Tower4, a Joe Brown Globe with a three-dimensional net climber, and more! The ten metre ascent inside the Tower is challenging, yet the structure is enclosed by safety mesh that is virtually transparent, giving accompanying adults full visibility to what's happening inside. Families can take a break from shopping to have fun creating their own adventures across the sprawling grounds of the playground. The various elements of the play park give access to children and adults alike, no matter their age or ability.





Kids have never-ending options to swing, climb, slide, balance, and play to their heart's content.



What looks confusing from the outside is structured on the inside. Level after level must be climbed to reach the top of this intricate tower – with an exhilarating, sliding descent as your reward!





## Magical, crazy and totally twisted – **with Triitopia, anything is possible!**

Triitopia spectacularly combines award-winning design with proven materials. A magical world of climbing and adventure arises, where reality and fiction merge in the unpredictable interplay of transparent and closed facade elements that are combined in close-knit, nested and asymmetric ways. Diverse net sections entice climbers and lead to numerous corners, angles and up to viewing areas and slides on different levels. Behind the seemingly arbitrary architecture lies a highly modular system that enables the size and shape of every Triitopia structure to be completely custom designed. A wide variety of design possibilities ensure that every climbing frame fits exactly to your desired theme world – whether underwater world, knights' castle or dragon's cave – anything goes! Whatever theme world you want, come to us with your ideas! Together we will turn your vision into a reality.





Swifter than the wind – our slides.  
This curved slide starts at a height of 11 metres.



Swinging, not reeling! A huge three-dimensional net inside the tower provides climbing fun for a lot of kids at once.





Custom configure your climbing tower!  
Choose from net tunnels, different panel  
designs, various slides and more.

Various entry elements and attachment  
options create a versatile climbing ex-  
perience.





Heaven and earth reversed –  
**Airy climbing at Karls Erlebnis-Dorf adventure park**

Karl's adventure village in Elstal near Berlin launched the „K2-Kartoffelchips Erlebniswelt“ in spring 2018. This large indoor playground in the shape of a custom-made solution by the Berliner Seilfabrik above the tables of the potato restaurant. A total of four climbing potatoes in two different sizes at a height of over 3 metres are suspended at different heights from the ceiling of the chip factory building. Everything is connected via various net tunnels. Two vertical net tunnels are connected to the two smaller climbing potatoes at the bottom as an ascent and descent option of the climbing world. The side and top openings of the structure are closed with net elements, thus guaranteeing the necessary safety while at the same time providing a high degree of transparency. Each tunnel differs in terms of the gradient, length, shape and size of the openings and also has a different variant of climbing ropes.



The potatoes are suspended from the restaurant ceiling at the new Kartoffelchips Erlebniswelt (Potato Chips Experience World).



Head over heels from rope to rope. Various add-on elements in the tunnels increase the kids' playing fun!







## Climbing the Bromberg – **Aventura – the SpielBerg** play mountain

Things get off to a wobbly start at the foot of the Bromberg. A large entrance net leads into a tower like a treehouse. And that's just the start of Europe's longest climbing facility. Over a length of 168 metres, various tunnels and bridges, balancing elements and rubber mats wind their way up the mountain through various towers. "Aventura – the SpielBerg" opened in September 2015 in Medebach, a small town in Hochsauerland, a holiday resort that attracts walkers in summer and skiers in winter. The original idea was penned by landscape architect and biologist Jean Henkens. He drew inspiration from the Bromberg's history. Thus air and the signs of the four elements became the theme of the giant climbing frame. The project was further developed and implemented by the landscape architects Gasse|Schumacher|Schramm from Paderborn in cooperation with the Berliner Seilfabrik.



One foot in front of the other up to the summit! Climbing and balancing promote the social skills of children in a playful way.



Disc-shaped nets allow access to some towers. These elements should remain as transparent as possible and still be secure.





Whether climbing over nets, up ladders or across flat nets or descending via banisters, sliding poles or slides – the wide range of attachments will fulfil your every wish.



Some of the towers are covered with bamboo panels in the Greenville style. The course is a challenge for both large and small climbers.



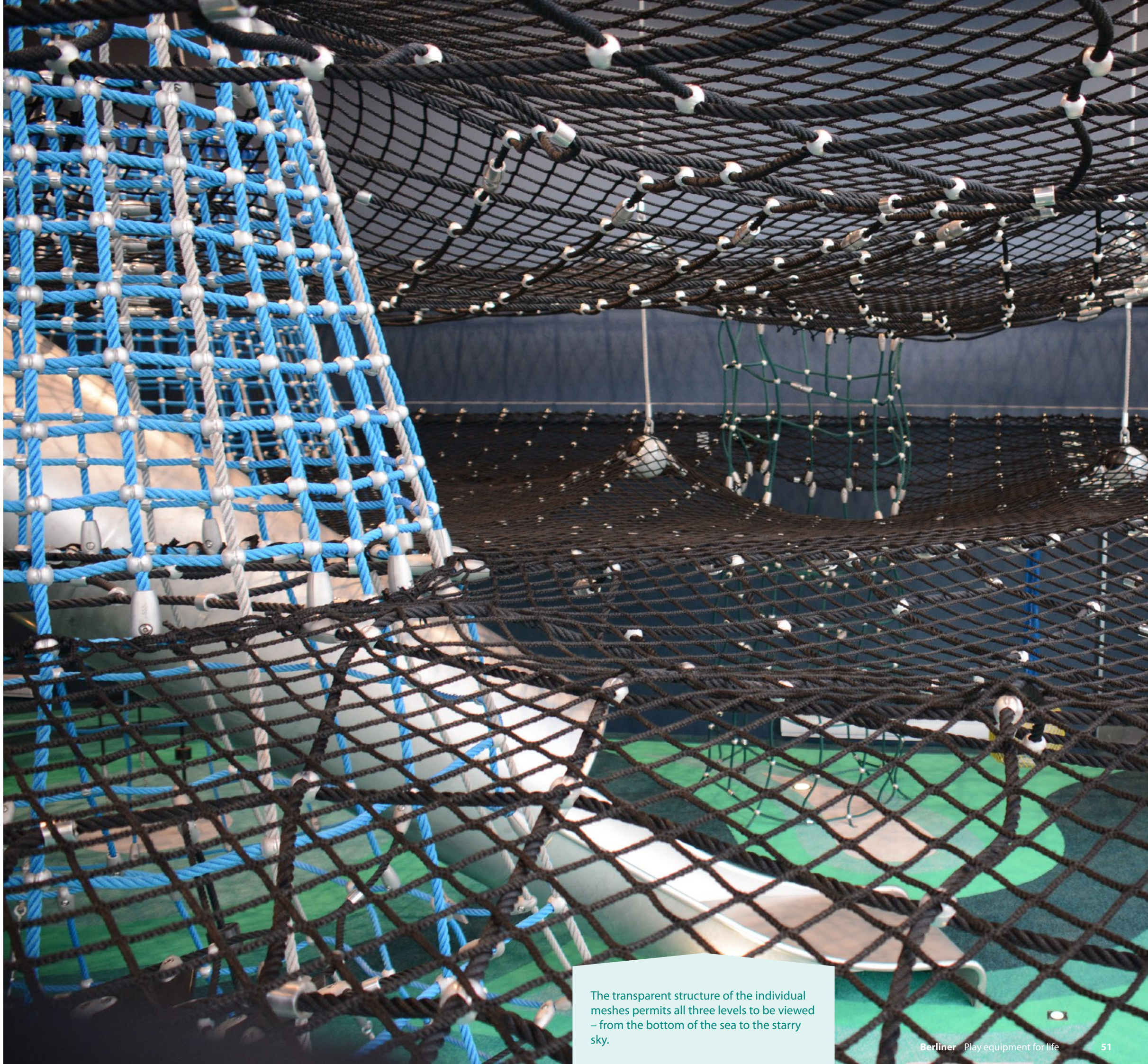
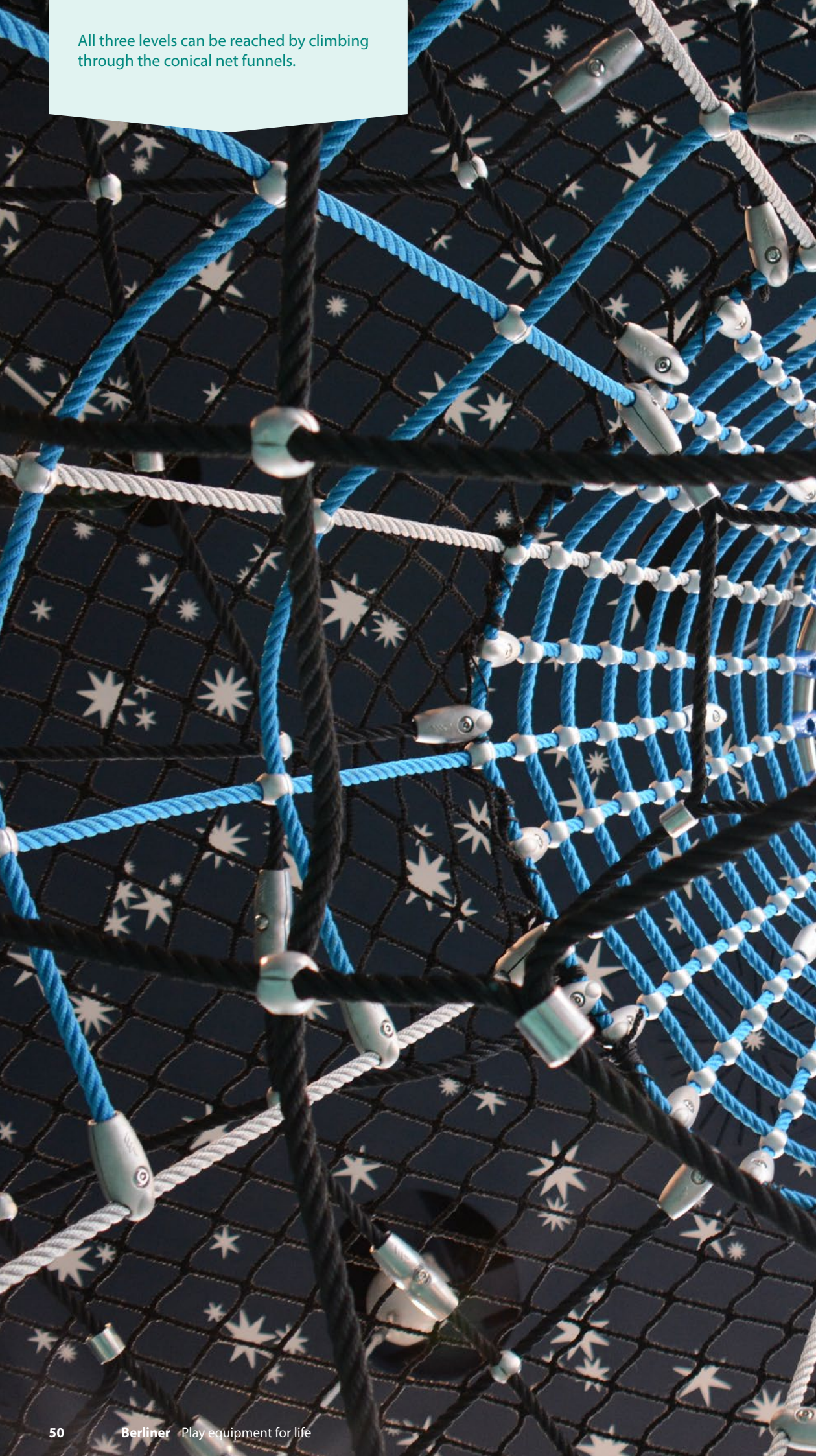


From the sky to the bottom  
of the sea!  
**A special kind of indoor  
climbing world**

In the Geoparc de Percé in Quebec, Canada, the new indoor playground recreates the surrounding geographical features, which features massive cliffs and impressive rocky islands. Drafted by architects Groupé BC2 and realised by the Berliner Seilfabrik, you can now dive into a water world of various net landscapes. Two black spatial nets stretched across the entire room split the space into three levels, creating the sky above, the marine world in the middle and the seabed below. The three levels are connected by three conical net funnels and a tunnel slide, which leads rapidly from the „sky“ directly to the „bottom of the sea“. Hammocks are located directly under the ceiling on the top level. This gives the impression of floating on clouds above the „sea“.



All three levels can be reached by climbing through the conical net funnels.



The transparent structure of the individual meshes permits all three levels to be viewed – from the bottom of the sea to the starry sky.



## Climbing on planets! **Cosmodrome**

In the grounds of the Cosmodrome in Genk, Belgium, where everything revolves around the topic of space, there is now a varied adventure playground. Known as the “play planet”, it offers everything a kid’s heart could desire! Various climbing, rocking and balancing options are arranged in a circle as if in planetary orbit. Thus the design fits perfectly into the prevailing theme of „Cosmic Adventure“ and offers exciting challenges for a variety of age groups. While the Monkey Jibe, VIP swing, hammock and nest swing encourage turning, seesawing and swinging, the climbers enjoy themselves to the max on the various surface nets, a cube of rubber membranes and a net funnel.





Jumping and chilling in one! Flexible rubber mats are attached at different heights to form a three-dimensional chess board.



Whether up or down, inside or outside, the net funnel can be climbed all around and upside down!





Berliner Seilfabrik GmbH & Co.  
Lengeder Straße 2/4  
13407 Berlin

T + 49 (0)30 41 47 24 - 0  
F + 49 (0)30 41 47 24 - 33

info@berliner-seilfabrik.com  
www.berliner-seilfabrik.com

Published: July 2020

