

Compendium Zip



Berliner Seilfabrik

Play equipment for life

The first steps towards Berliner Seilfabrik were made in 1865, when a factory producing ropes for the Berlin elevator industry was founded. The quality of the Berliner ropes gained a worldwide reputation. In the early 70s, we created the first spatial net climbing structure and began the world's first production of rope play equipment. However, the rope play equipment division initially remained very small and played a minor role as a side-line business. But even then, Karl Köhler who joined the company as a plant engineer in the late 70s worked with great enthusiasm on the further development and production of playground equipment. When the Bavarian parent company moved out of West Berlin and intended to give up its production facilities in 1995, Karl Köhler, then already Managing Director of Berliner Seilfabrik, seized the opportunity and took over the traditional rope factory in a management buyout.

Since then, Berliner Seilfabrik has been developing and producing exclusively playground equipment and has made a name for itself worldwide. Today, Berliner Seilfabrik is an international play equipment manufacturer and a full-service provider with around 150 employees, a subsidiary in the USA, and a strong partner network across the globe. Children can climb and play on Berliner structures across 56 countries. Our family-owned company, based in Berlin's Reinickendorf district, is being run by David Köhler, the second generation of the Köhler family, with the utmost dedication and commitment. We are proud to be one of the world's leading and recognized manufacturers of playground equipment, producing high-quality, unique, modern, and versatile play structures with high play value in Berlin, while continuing to grow through constant development and innovation of our products.

Content:

- 4 Product Groups
- 32 References
- 52 About Berliner



Our Headquarters and Production based in Berlin

- Plant 1 – Rope Production, Rope Assembly
- Plant 2 – Powder Coating, Packaging
- Plant 3 – Steel Construction, Mechanical Engineering

The Berliner Creative Center, with planning, design and development, the administrative areas, such as purchasing, sales, controlling, human resources and marketing, as well as quality department and the management are also located in Plants 1 and 3.

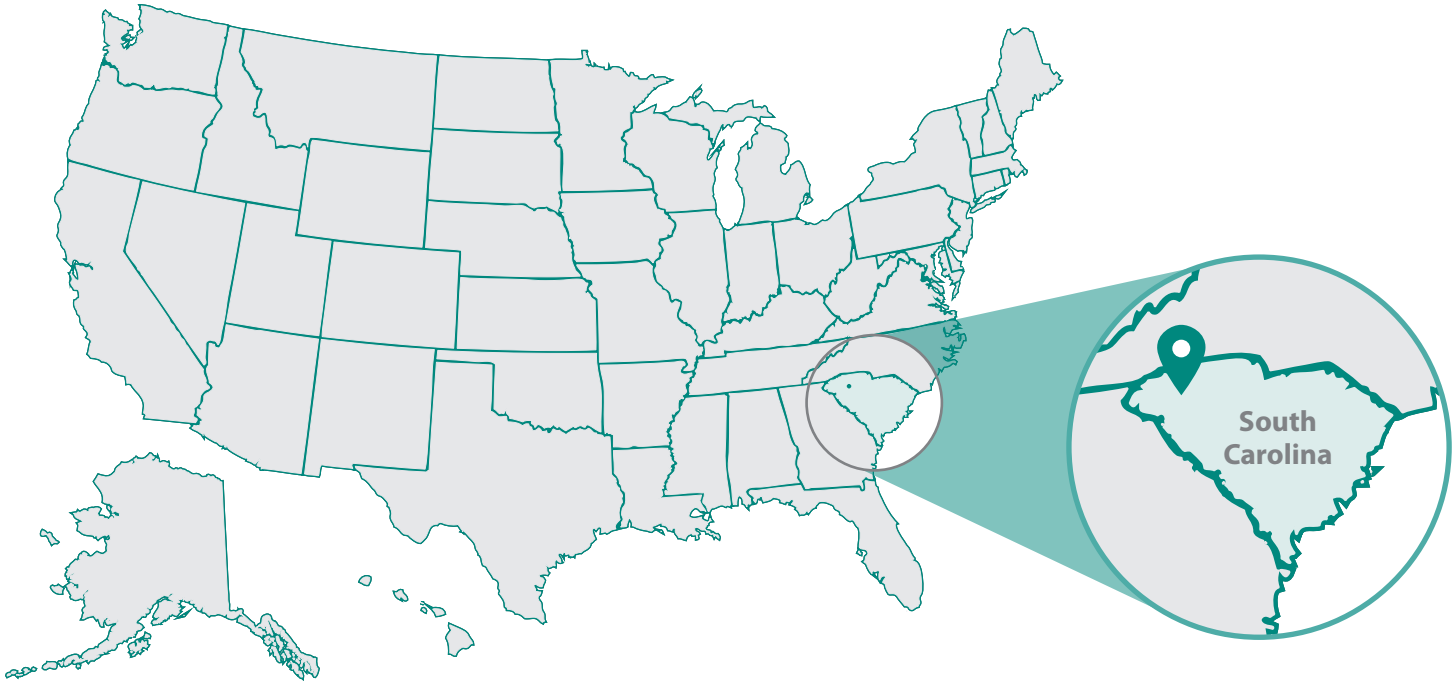
info@berliner-playequipment.com
www.berliner-playequipment.com

Play Equipment Corporation

Made in Germany & the USA

For over 50 years, Berliner Seilfabrik has defied the expectations of traditional playground equipment while building an extensive product range with creative ideas and industry expertise. After becoming a household name worldwide, Berliner decided to expand into an important sales market and started the U.S. subsidiary, Berliner Seilfabrik Play Equipment Corporation, in Greenville, South Carolina in 2008. Since then, Berliner USA has developed and grown into the U.S. market. Over the years, they have tripled their office and warehouse space along with increasing staff. Using the larger warehouse space, Berliner USA has established a quick-ship of stocked items, along

with replacement parts, and an evolving production line that includes the Roplay line of IKOs and Varios and HodgePodge's Cloud 9 and Palmetto Saucer. Berliner USA would not be successful without their fantastic team providing excellent customer support. From the Berliner Creative Center USA with their multiple in-house playground designers, local technical expertise and Berliner employed direct representatives to the regional sales directors, inside sales administrators and fantastic professional distributors. The staff and dealers of Berliner will continue to cultivate and exceed standards while providing users across the U.S. with innovative play equipment.



Our Office and Production based in Greenville, SC

The Berliner Creative Center USA, sales, operations, and marketing are also located here.

As a full-service provider for playgrounds, we accompany you across all development stages of your individual playground: from the initial planning to the maintenance of the completed structure. With our own production and our own U.S. subsidiary, we offer you the highest quality and maximum flexibility in the implementation of your wishes.

Technical Support: + 1 864 527 6263
Sales Hotline: + 1 864 627 1092





WaggaWagga

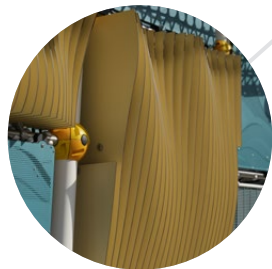
Unique design and high play volume
on a narrow footprint

Our latest product line WaggaWagga offers a distinctive design and a large play volume on a narrow footprint. The attractive clad design results in little safety surfacing and reduces the need for safety surfacing material. WaggaWagga can be used particularly well when space is limited but a variety of play functions are required. For the exterior design, you can choose from the following four styles: Blades, Joe's Grid, Greenville or Miami. The innovative transparent option Joe's Grid, themed perforated panels as well as new three-dimensional wave-shaped Blades made of HPL are available. A mixed style is also possible. Various play elements inside ensure maximum fun.



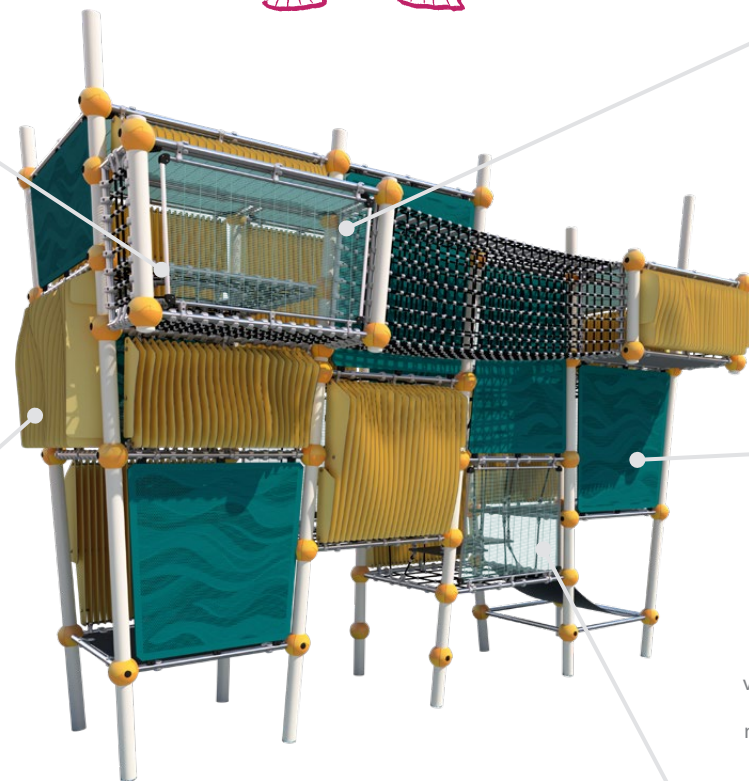
Play Elements

There is a lot to discover inside WaggaWagga! A variety of play elements such as rope ladders, net tunnels, rubber mats and climbing ropes await little climbers behind the facade and make climbing the three levels a fantastic adventure.



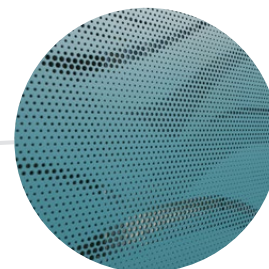
Blades

The new HPL panels with their different contours form an undulating facade and create transparency in the front view.



Balcony

An absolute highlight are two balconies connected by a net tunnel. They provide great opportunities for play, relaxing or enjoying the view.



Perforated Plates

You can freely choose the pattern for the perforated plates. The variation through the holes between 2.1 and 7.5 mm makes the selected motif appear three-dimensional and avoids finger traps.



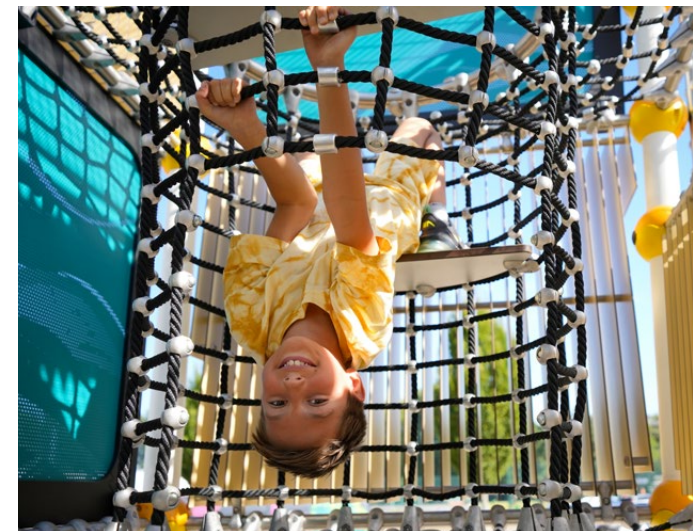
Little Safety Surfacing

By covering the play equipment with panels, only a small amount of safety surfacing is required, reducing the need for safety surfacing material.

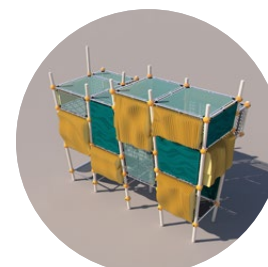


Joe's Grid

Thanks to the transparent Joe's Grid the caregivers always have the children in view. The steel grid is held in an aluminum profile frame. The grids can be powder-coated in any RAL color.



4 Styles available



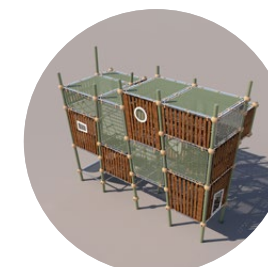
Blades

The undulating HPL panels offer a unique design and, in combination with themed perforated panels and transparent Joe's Grid, give the play equipment a modern and distinctive look.



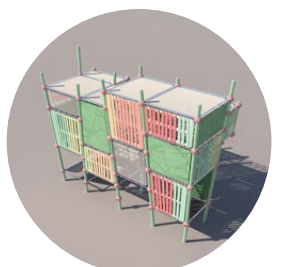
Joe's Grid

WaggaWagga can be designed with our newly developed see-through Joe's Grid and thus completely transparent, which gives the climbing structure an industrial look and makes it easier to supervise the children.



Greenville

Cladding with bamboo panels in the design of our Greenville product line is also possible. This creates a natural look of the play structure.



Miami

The five soft pastel shades of the "Miami" style in which the facade elements are clad make WaggaWagga a real eye-catcher in any environment.





LevelUp®

Tradition and innovation – the old established idea of towers and platforms redefined



With LevelUp®, the traditional idea of towers and platforms is supplemented by innovative add-on components and inclusive play elements. The well-known playground concept in innovative design combines technical finesse with high-quality standards and offers every playground planner unexpected possibilities with integrated shade structures. New organic alignments are created by the seemingly randomly chosen tilted posts.



Transfer Station
Steps and handles help to support the climbers' needs to make it to new heights.



Roof
Printable on both sides, dirt-repellent, recyclable and UV light resistant mesh fabric in the leaf-like roof construction



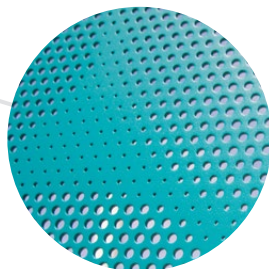
Play Panels
Integrated sensory-motor play panels located close to the ground to support motor and auditory development



Polynode
Individually colored, four-part ball clamp to hold the horizontal tubes without any screw connection



Add-on Components
Numerous attachments which can be installed in almost every position



Perforated Plates
Special three-dimensional look due to the individually definable perforated patterns



30
Various Add-on
Components



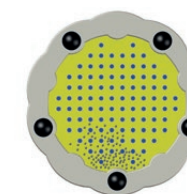
Honolulu, HI



Solar Explorer
Like an astronaut, you can land the spaceships on the planets.



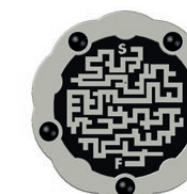
Tile slide Fish
The fish motif becomes visible when all parts are arranged correctly.



Tumble Turn
The stainless steel balls move merrily according to the direction of rotation.



Chimes
Play the different tones according to their colors with the melodious chimes.



Spin Maze
Move the ball with the spinning disc and find the exit of the maze.



Bongos
These bongo drums set the rhythm.



Greenville

Bamboo Treehouses, Rope Playhouses and Towers –
this product group is setting a new standard.

Our special product group Greenville adds an element of natural design with the addition of bamboo panels. Treehouses, Rope Playhouses or Towers can be used as stand-alone structures or can be extended by Bridges, Tunnels, and other elements.



Triitopia

Behind the seemingly random construction lies a highly modular system that allows every Triitopia to be custom-designed.



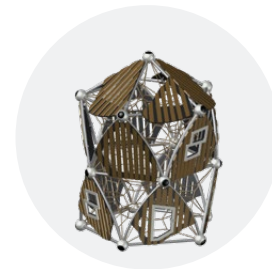
Triis

These beautifully designed treehouses in different sizes can be equipped with various add-ons or can be connected to each other.



Towers

The Towers provide height that creates maximum play volume within a smaller footprint. In addition, they can be combined in endless configurations.



Bam & Boo

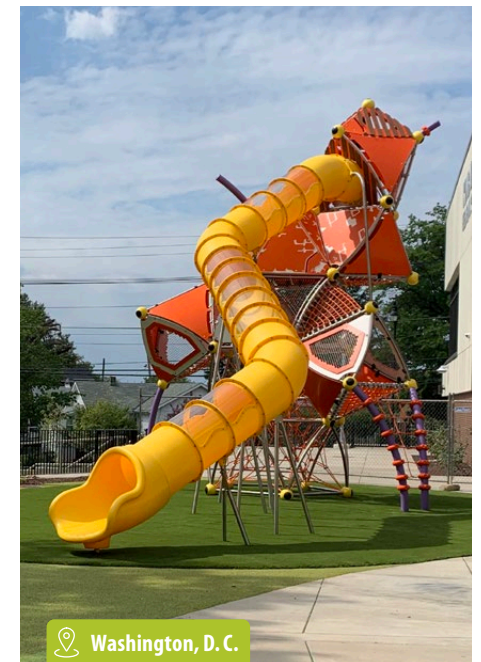
The bamboo panels give the Rope Playhouses the resemblance of a classic playhouse in nature, while still being more valuable with a three-dimensional net.



Rancho Cordova, CA



Sacramento, CA



Washington, D. C.



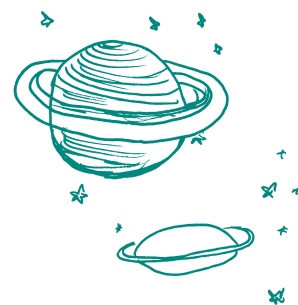
The new product LaGrange is the largest playhouse of the Greenville line in an exciting design with numerous climbing elements inside.





Univers

The universe of spatial net structures in a wide spectrum of colors, shapes and sizes

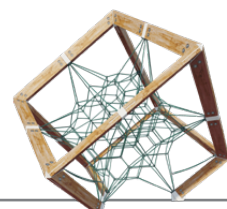


Univers are spatial net structures with an outer framework and a three-dimensional net inside. All play structures in this product group are equipped with the patented AstemTT® tensioning system. This allows optimal tensioning of the net and makes re-tensioning a simple task. There are six Univers subgroups:



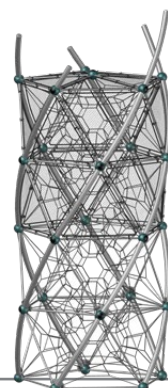
Lunia

Our new Lunia makes climbing wishes come true. It is available in two different sizes. The huge spatial net inside can be reached via different ascent possibilities, such as Climbing Plates or Rope Ladders.



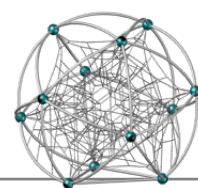
Joe Brown Collection

The "Joe Brown Collection" is the world's first rope play equipment with an outer structure made of wood.



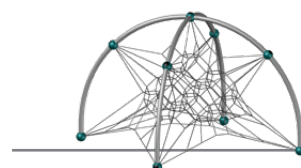
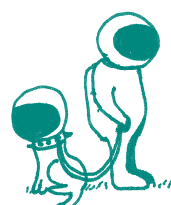
DNA Towers

The DNA Towers are graceful towers containing three-dimensional climbing nets and provide maximum play volume on a small footprint.



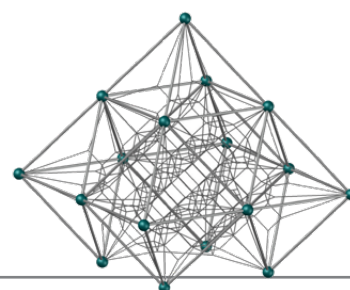
Cosmo

The first totally spherical rope play structure offers exciting play options. Apart from the basic system, Cosmo stands out due to its many freely selectable add-ons.



Quadrifol

The Quadrifol is a net climber with the spatial net suspended in a cross arch. This play equipment is not only easy to install and extremely low-maintenance, but also impresses with its reduced and elegant design.



Classics

These original spatial nets were born as a play concept more than 50 years ago and are still popular after several generations of play.



All Univers play structures are equipped with our innovative AstemTT® tensioning system.



Lunia's outer membrane can be printed individually.



The Globe (Joe Brown Collection) in Denver, CO



The Cube (Joe Brown Collection) in Danville, CA

Futuristic design combined with the natural wood material

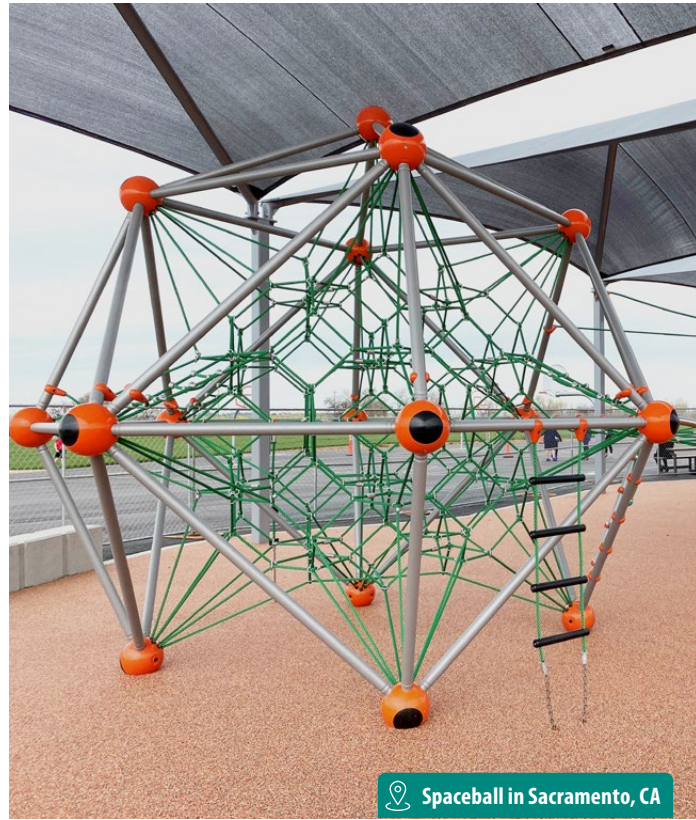
Photo: © Specified Play Equipment Co.



📍 DNA Tower in San Mateo, CA



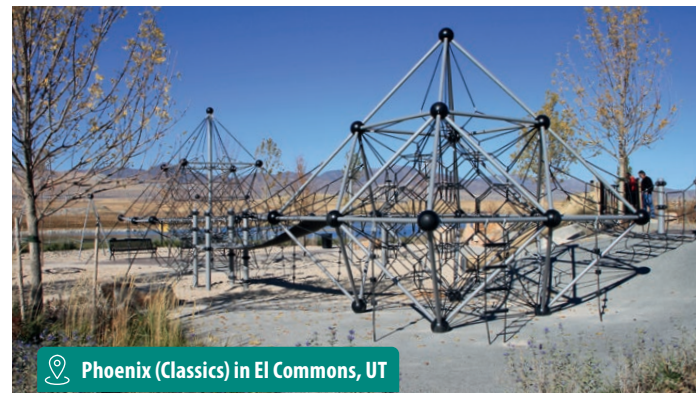
DNA Combi



📍 Spaceball in Sacramento, CA



📍 Neptun (Classics) in Union City, CA



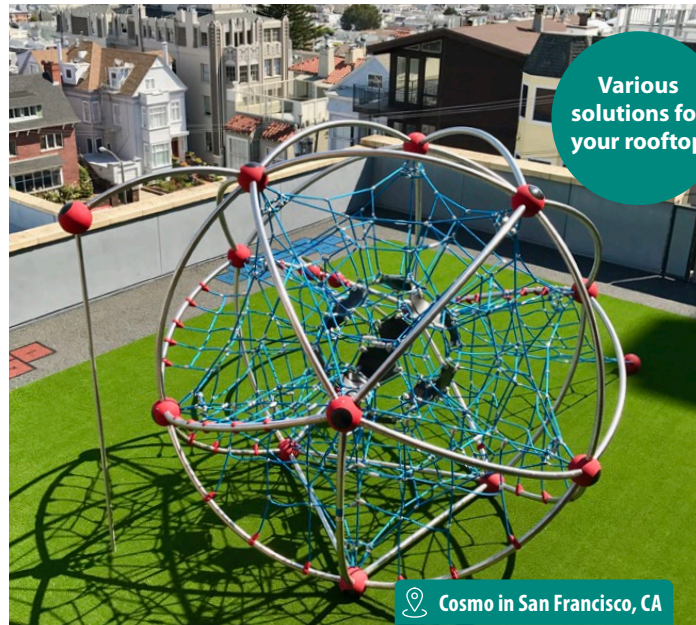
📍 Phoenix (Classics) in El Comons, UT



📍 Neptun (Classics) in Green River, UT



Quadrifol



📍 Cosmo in San Francisco, CA

Various solutions for your rooftop



Mini Mars (Classics) in Cullman, AL

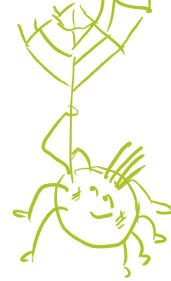


Cubiron (Joe Brown Collection)



Spooky Rookies

Play equipment for climbing beginners



The playground equipment of the Spooky Rookies product group is designed for use in day-care centers and public playgrounds. They are specially adapted to the needs of toddlers and their psychomotor development. There are three Spooky Rookies subgroups:



Wonderwalls

Between four walls in imaginative themed designs, all play units create several play worlds, which are connected by windows and passages.



Spoo

Our cozy playhouses are available with a wide variety of add-on components and can be connected by different elements, such as rope or rubber bridges.



Roo

With our larger playhouses, various play functions can be added, such as a Sand Table, Tic-Tac-Toe, Memo-Play and more.



Great Fun for small Children

Early motor and psychomotor development are important for children later in life. It's important to nurture and challenge children from the earliest age. Our Spooky Rookies product group is particularly aimed at toddlers. A multitude of products from our other product groups also offer nursery children tons of fun as well as many opportunities to develop.

"Small rope nets allow young children to gain their first experience of climbing in three dimensions."

It's important to create a safe and comprehensive range of play possibilities for this age group, so they can improve their social and motor skills. Classic playground activities such as using the swing or slide are just as popular as opportunities to acquire everyday skills in role play. After mastering one skill, children are always excited to find the next great adventure! Though they may not be ready for wide stepping stones, they are able to grasp the changing of walkways and learn the ability to go up and down ramps.

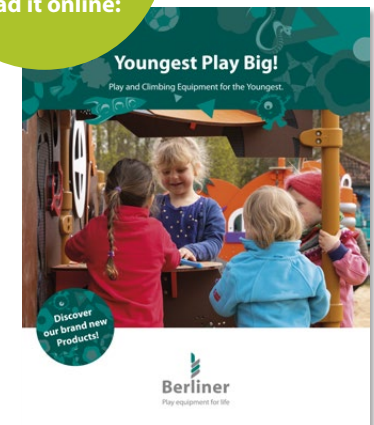
In the case of sliding, it should be possible for them to reach the slide on their own. As for climbing there, it would be beneficial to provide various levels of difficulty. Nets, ladders, ramps or even steps offer a wide variety.

Bridges with rubber membranes or small-meshed nets are very popular and train their balance for the next developmental step – whether it's standing, running, hopping, or even riding a bicycle.

Small nets offer the chance to gain initial experience in climbing in three-dimensional space. This also offers opportunity to meet another need at the same time. Children want to be high up! They enjoy the view or the overview. Here, everything looks beautiful and you're finally the tallest!



"Youngest Play Big" summarizes play equipment for toddlers. Read it online:





Twist & Shout

Customizable play sculptures with planar nets and multiple add-on possibilities



Twist & Shout are not only great fun, but also small works of art that can be completely customized. Whether the helical climbing structure Twist is 16 or 1,600 feet long, the net provides continuous climbing fun for young and old alike. Shout's steel frame runs parallel; how they zig or zag is completely up to your own creativity!



Cloverwood

The frame is made of laminated larch, across which the rope netting is stretched.



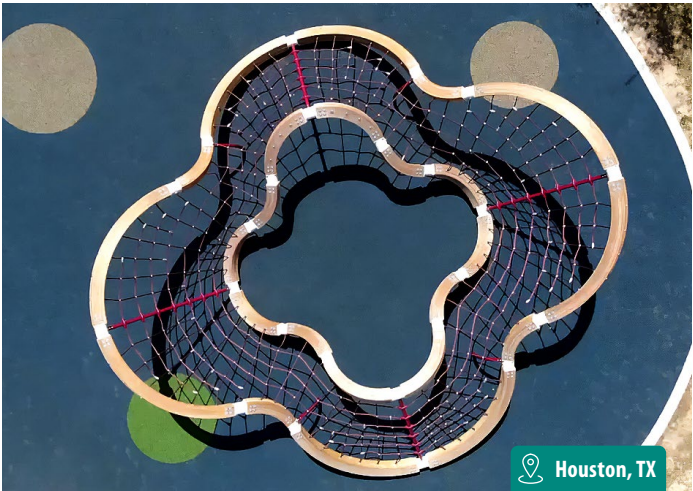
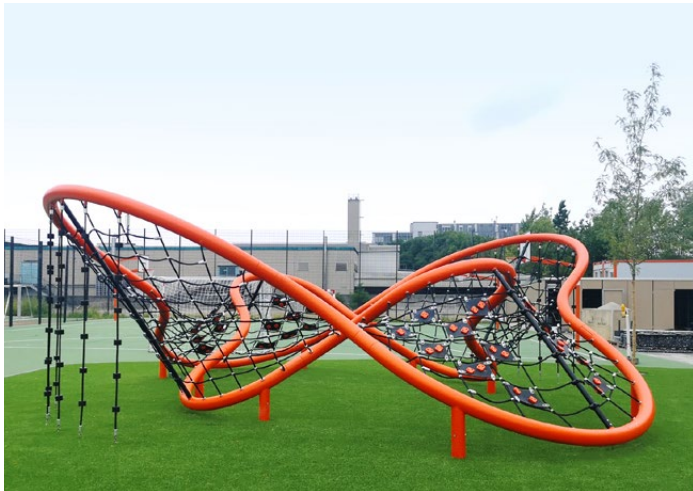
Twist

Arches of different sizes can be combined at various angles.



Shout

The undulating curvatures result in a unique climbing environment.



The patented Charlotte-Connector lets the rope disappear in the frame and simplifies the tensioning process.

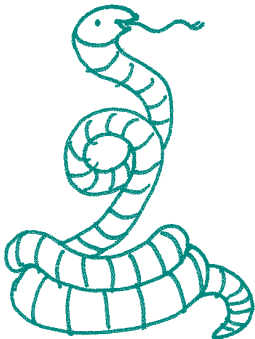


Photo: © Specified Play Equipment Co.



Can be connected to walls

Terranos & Terranova

Turn any space into a netscape and low rope course.

The Terranos & Terranova low rope courses offer plenty of space for climbing, swinging and dangling, chatting and relaxing. Thanks to individual planning, any area can be transformed into a net landscape. An infinite number of climbing elements, consisting of ropes attached close to the ground, allow climbing and balancing fun for children with different abilities.



Terranos

Straight posts in a classic design



Terranova

Curved posts in an organic design



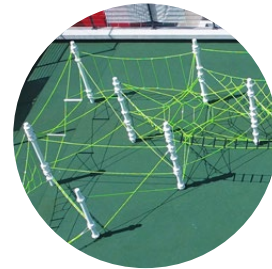
Terranos-Clamp

Connection of various rope elements to straight and curved posts in different ways



Themes

Individually themed HDPE panels



Unique Playscape

Possibility to create your own climbing landscape in just a few steps



San Mateo, CA



Photo: © ilkotie



With their curved posts, the Curlies wind gently in the air and offer a net floor to rest on at different heights.





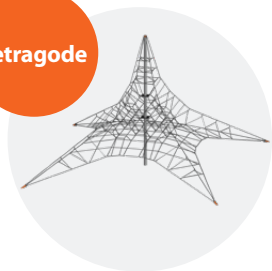
Polygodes

Central mast play structures in various shapes and sizes

There is enough space in our central mast play structures for children to enjoy the thrill of playing at great heights. The Tetragode extends from the central mast outwards in four directions to create its play space. The shape of the Pentagode offers even more space in which to climb. Its spreader bars extend outwards from the central steel mast, supporting five double ropes and giving the apparatus its characteristic appearance.



Tetragode



Four-way Tensioning



Six-strand Steel Cable



T-Connector

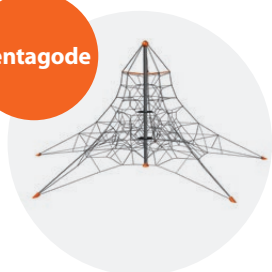


Different Heights



Protected Tensioning Technology

Pentagode



Five-way Tensioning



Tensioning Point on Top



Spreader-Bars



Double Rope



Anchor Point



8

Add a Greenville playhouse to create this PentaBoo.



Elk Grove, CA



Capsulated tensioning technology in the foundation tube for simple assembly and maintenance



Tensioning mechanism housed within spherical capsule atop the central support mast





HodgePodge

A variety of sturdy, durable sport and play elements



HodgePodge is an imaginative, diverse set of play equipment and elements that offer a variety of actions everywhere – even in the middle of the city: e. g., swinging, rocking, and rotating. HodgePodge play structures enrich every playground and are characterized by their enormous load capacity, technically advanced construction, and high design standards.



Swinging



Rotating



Rocking



Satellights



Mixed



Lincoln, CA



Shawnee, KS



Photo: © oikotie

The low access height of nest swings enables all children to join the fun.



In-stock Item

Orinda, CA



In-stock Item

Greensboro, NC



San Francisco, CA

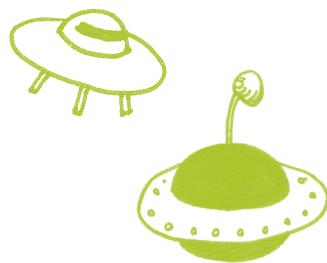
Satellights – first interactive rope play! Turn the wheel of the generator and off you go! The power supply cable runs inside the rope and drives the LEDs integrated into the discs.





UFOs

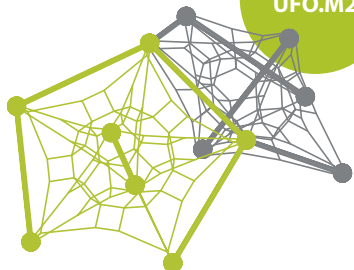
Spatial nets in pentagonal frames



The pentagonal Frameworkx frame of stainless-steel tubes – connected via hollow aluminum balls – surrounds a spatial net tensioned by means of a spreader bar. The compact UFOs can be combined to produce larger and more complex fleets.



× 1 =
UFO.M1



× 2 =
UFO.M2



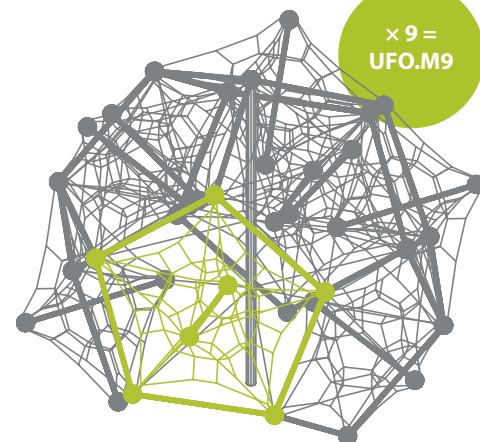
× 6 =
UFO.M6

Six units together form this play paradise. The UFO.M6 fascinates with clear design, high play value, and maximum transparency.

New York City, NY



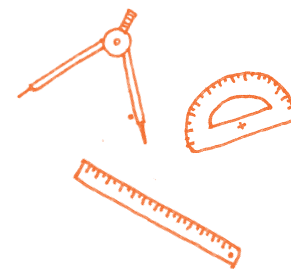
Photo: © Specified Play Equipment Co.



× 9 =
UFO.M9



San Francisco, CA



Geos

Multifunctional play domes



These structures are ideal for climbing, both inside or outside. The Geos offer enough space inside for playing soccer or as a safe play area with plenty of room for add-on components such as Hammocks, Ladders, Climbing Ropes or Net Funnels. The outer net structure as a ground-level component also guarantees inclusive play.



San Francisco, CA



Dublin, CA



Berliner Geos

25



Woodville

Whimsy from wood – strength from steel



In contrast to typical wooden playground units, Woodville distinguishes itself through its individual design and its durability. This is achieved through the use of high-quality materials and the hybrid design of wood and steel.



Roof

HDPE tent roof from folding formwork for a realistic shed look and protection of the wooden components



Window

High transparency thanks to the windows with oversized openings



Post

Coated steel of the two-part posts in the bottom area for protection from corrosion



Various Sizes

Both for big and small children



Terranos-Clamp

Secure fastening and highest modularity because of the Terranos-Clamp



Ball

System balls made of aluminum act as connecting elements between wood and steel posts



Santa Rosa, CA



Roplay

All-round play value can be that simple.



The Vario and IKO involve no major planning, delivery is fast and installation straightforward. All tensioning points are based on the AstemTT® system to ensure that no technical connecting elements are located in the play space. The frameworks make them expandable! The Vario can be equipped with various add-on components including slides.



In-stock Item



Photo: © oikotie



Photo: © oikotie

Read the brochures online:



In-stock Item



Woodside, CA

Photo: © Specified Play Equipment Co.

Photo: © Specified Play Equipment Co.

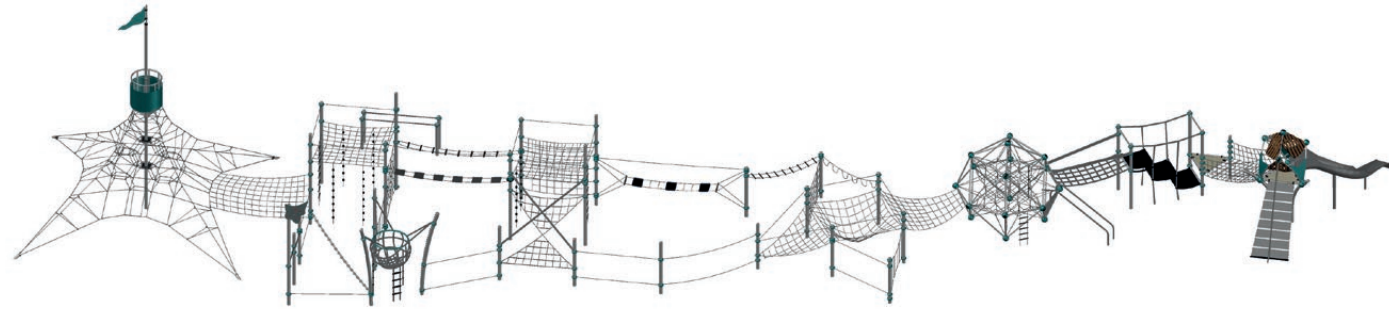


CombiNation

The clever combinations of all play systems



Varied playgrounds are a great challenge for children – especially when climbing through from start to finish without ever touching the ground! Our modular system allows for the imagination to run wild with all the CombiNations that can be created. Our product groups consist of the same building blocks making it an endless range of possible creativity.



Polygodes

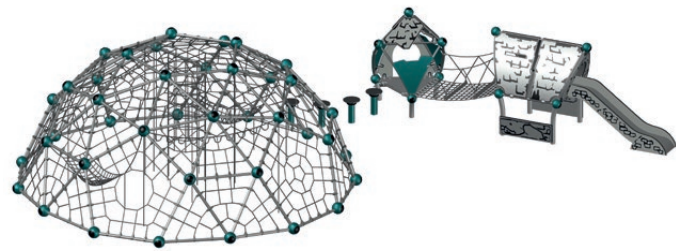
HodgePodge

Terranos & Terranova

Univers Terranos & Terranova Greenville

43

Discover this CombiNation in our references.



Geos

Spooky Rookies



Orlando, FL



Arlington, VA



Grandview, MO



Silver Lake, CA



Greensboro, NC



Sacramento, CA



Create your own playscape from our various product groups!



Add-on Components

A large variety of our add-on components, suitable for all product lines, offer a wide range of options to customize the play area for all age groups. With the add-on components, the playscape can become even more inclusive. Make your playground unique and choose individually from our numerous add-ons!

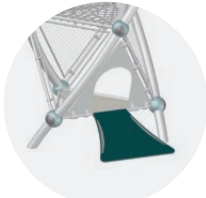


Access & Exit

Ladder



Rope Ladder



Ramp



Stairway



Access Net



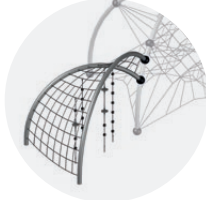
Climbing Rope



Rocking Plates



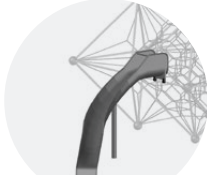
Transfer Station



Net Arc



Stainless Steel Slide



Curved Concave Slide



Straight Concave Slide



Sliding

Fast Lane Slide



Curved Tunnel Slide



Banister



Sliding Pole



Bridges

Net Tunnel



Suspension Bridge



Rubber Bridge



Panel Bridge



Wobble Way



Chessboard Bridge



Crossed Stairway



Sway Bridge



Jungle Bridge



On Top

Leaves



Flag



Fort



Dormer



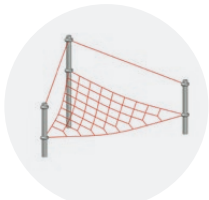
Crow's Nest with Flag



Greenville House



Shades



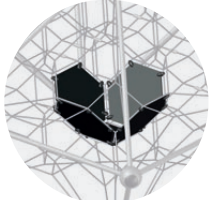
Triangular Net



Rubber Mats



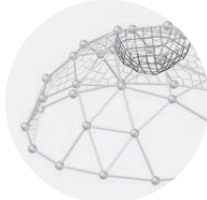
Hammock



Rubber Nest



Rubber Seat



Net Sack



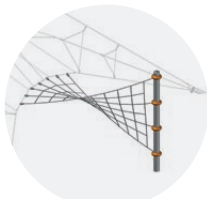
Relaxing

Chessboard Cube



Balancing & Dangling

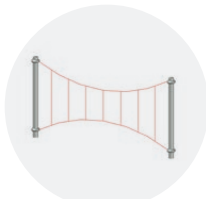
Slackline



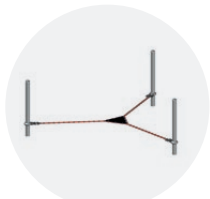
Twisted Net



Air Walk



Harp Net



Triangular Slackline



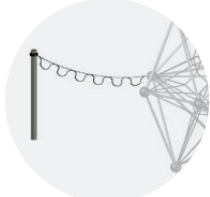
Balancing Cable with Handrail



Dangle Arc



Hand-over-Hand Ladder



Loop Rope



... and many more:



Small Sand Workshop



Duck Jibe



Satellites



Custom-made

Custom-made projects allow combinations in infinite ways.

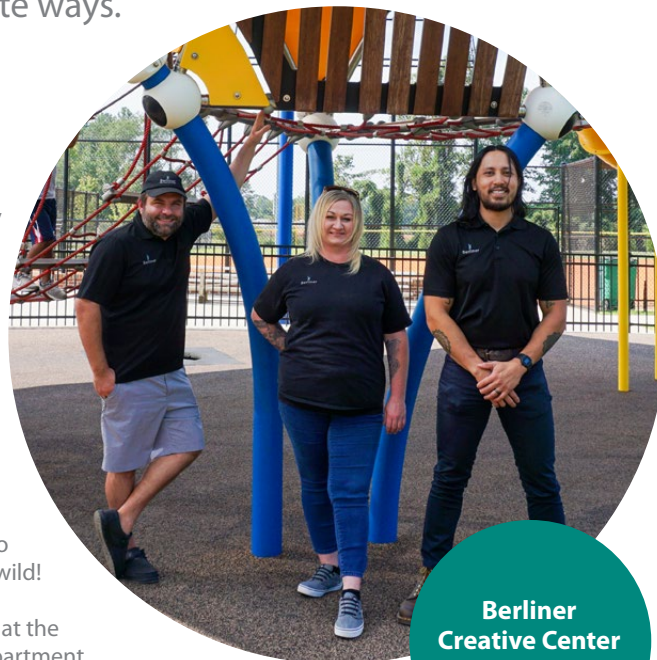


One of our greatest competitive advantages lies in the development of customized playgrounds. Whether it's an Australian bottle tree, a hot air balloon based on a work of art or the longest climbing structure – our Berliner Creative Center fulfills every architectural wish. Architects, designers, landscape planners, and engineers design customized and one-of-a-kind play sculptures, create new shapes and implement customers' wishes. This results in distinctive play landscapes which encompass customers' ideas with optimal safety and maximum play value.

To help you visualize your ideas and find the perfect design for your playground together, our creative professionals produce high-quality renderings before the construction phase. Even our standard products can be customized according to individual wishes and adapted to the geographical environment. Let your imagination run wild!

In addition to the Berliner Creative Center, which is based at the headquarters in Berlin, there is a planning and design department exclusively for the American market – Berliner Creative Center USA in Greenville, South Carolina.

Our playground equipment has already won several Red Dot Design Awards and the German Design Award.



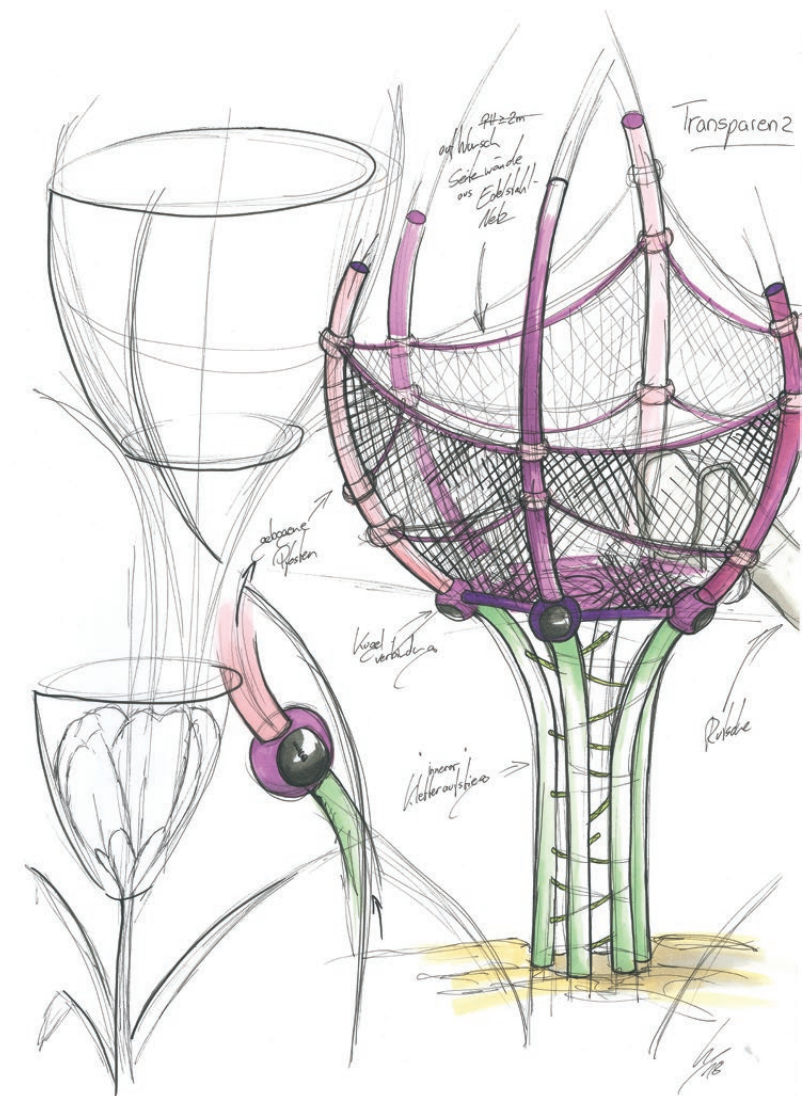
Berliner Creative Center USA



Berliner Creative Center



"We create something completely unique. It's often the case that the landscape or themed world for which the structure is to be created ensures a design that cannot be replicated elsewhere."

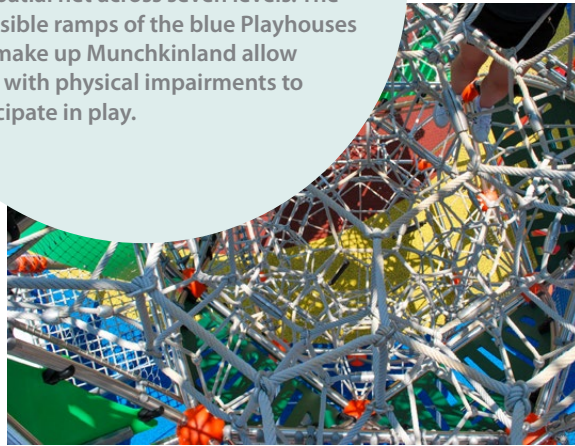




Pleasant Park

Apex, NC

This playground, inspired by the classic “The Wizard of Oz”, offers the opportunity to get to the magical land like Dorothy and her dog Toto. In the 33 feet tall Triitopia, children can climb the spatial net across seven levels. The accessible ramps of the blue Playhouses that make up Munchkinland allow users with physical impairments to participate in play.

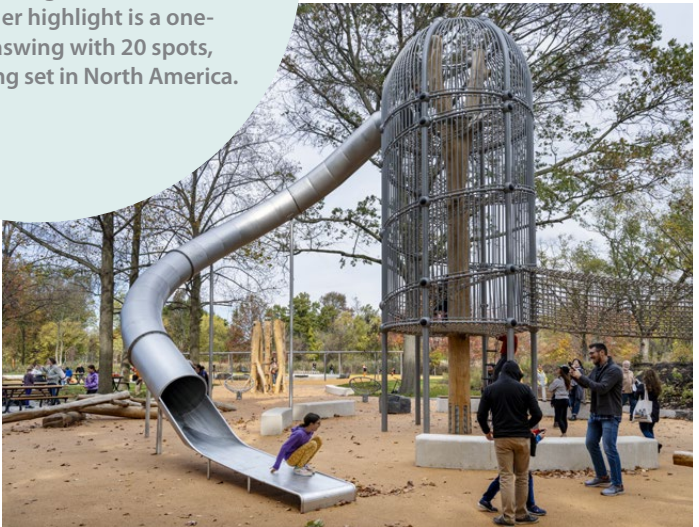
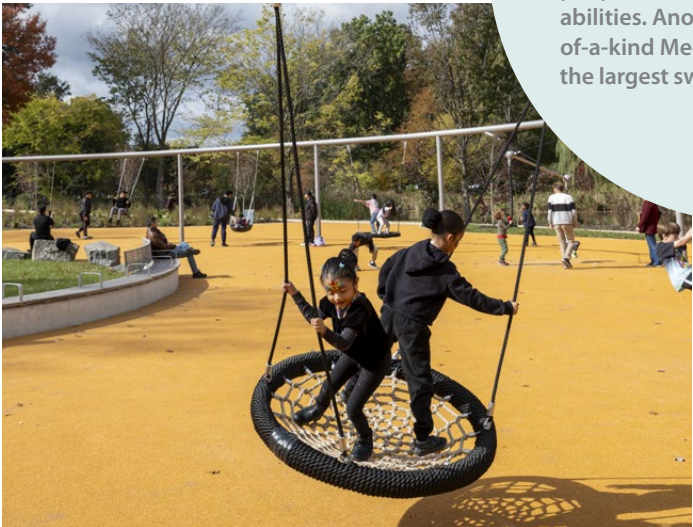


Anna C. Verna Playground at FDR Park

Philadelphia, PA



This unique and inclusive play space features the custom-made birdhouses with rope elements and slides that honor FDR Park’s role as an important bird habitat and connect people to nature regardless of their abilities. Another highlight is a one-of-a-kind Megaswing with 20 spots, the largest swing set in North America.



Photos: © Sarah Coston-Hardy



Central Park West

Huntington Beach, CA

This spectacular structure is over 88 yards long and can be climbed from one end to the other in one go! Two big spatial nets, one long net tunnel, a rubber Chessboard Cube, two parallel Speedways and lots of smaller climbing elements provide gigantic fun for all neighboring kids.



Peter Bluesten Park

Hallandale Beach, FL



This custom-made Shout structure underlines the fluidity of an inclusive park. Climbing ropes and rope ladders offer alternative access points for children of different abilities and provide further challenges. The VIP Swing rounds off the fun! The aim here is to set the pendulum swing in motion together and find the same rhythm.





Sunset Park

Livermore, CA

This unique playground features an exciting climbing tower, a magical and award-winning Triitopia and many more climbing components that guarantee an adventurous journey. The massive vertical tower stands 24 feet, offering views of the captivating play space below.



Photos: © Specified Play Equipment Co.



Városliget

Budapest, Hungary

This special play park has everything a child could wish for. High towers with spatial nets and planar nets, a low rope course and much more. The balloon, hiding a net structure inside, was a customer request and the model for our product group Lunia.



Denver Premium Outlets

Thornton, CO

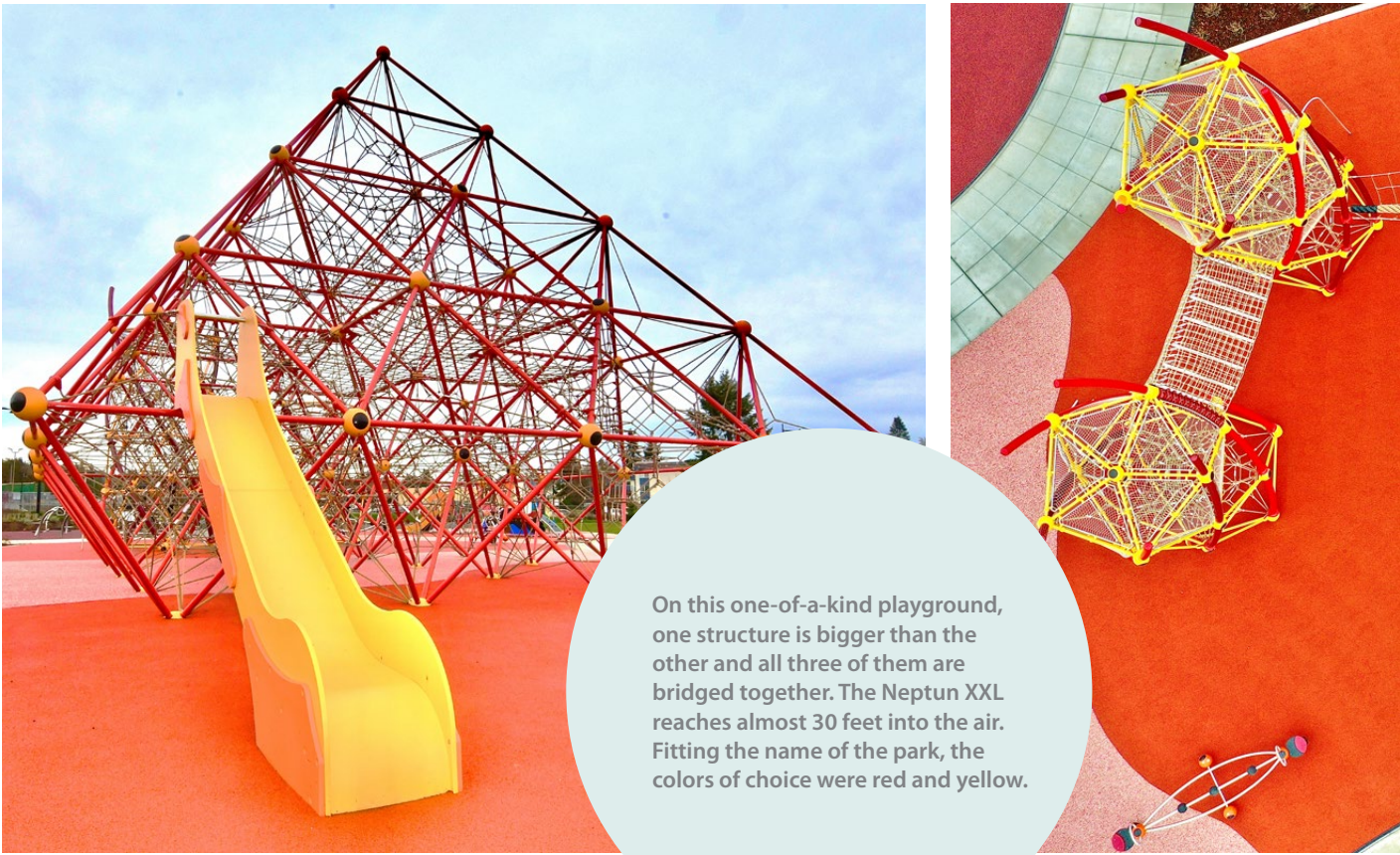


On this playground, not only will you find plenty of color but plenty of play structures as well. A high tower, little treehouses connected via net tunnels, two different slides, two types of spatial nets and a planar net will definitely keep the kids in motion.



Sunset Neighborhood Park

Renton, WA



On this one-of-a-kind playground, one structure is bigger than the other and all three of them are bridged together. The Neptun XXL reaches almost 30 feet into the air. Fitting the name of the park, the colors of choice were red and yellow.





Wilder Bluff Park

Shawnee, KS

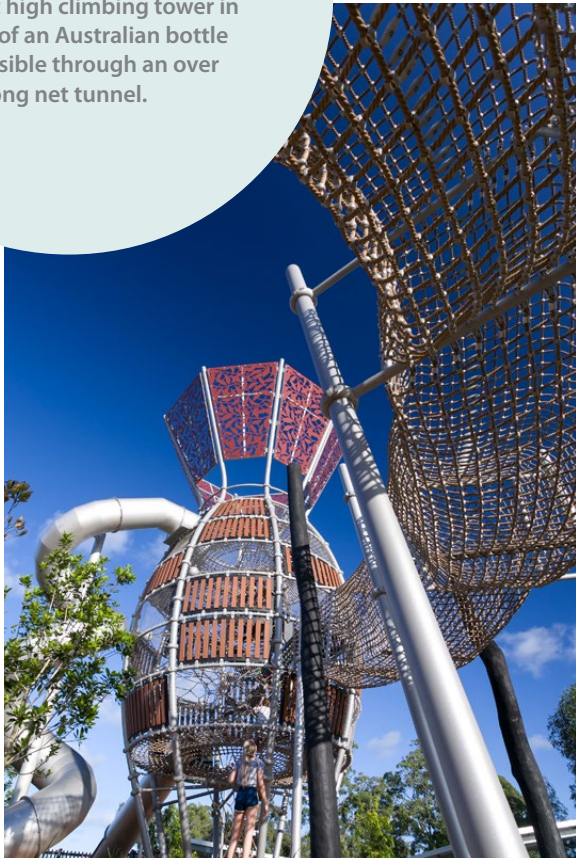
For their new city park, the community wanted an all-access playground that allows kids to get “into the trees” and experience nature. We were able to design this play space utilizing the existing topography. On the upper area, more play elements are accessible to everyone.



Bim'bimba Park

Greens, Australia

The intention for the park was to use the raw and natural beauty of the landscape to create an inspiring and communal play space. The highlight is a 46 feet high climbing tower in the shape of an Australian bottle tree, accessible through an over 38 yards long net tunnel.





Cosmodrome

Genk, Belgium



This multifaceted playground attracts attention due to its circular shape and bright color. A wide variety of play functions, such as climbing, swinging, rocking, sliding and balancing, help the kids to let off steam. Of course, there is also plenty of room to relax.



Imagine Playground

Dublin, CA



Our main attraction for this project is our Geoball, which has been described as a real play circus. The custom-designed Shout structure offers climbing fun mixed with socializing, balancing, swinging and relaxing. A play panel is set at a lower level so anyone can use it.



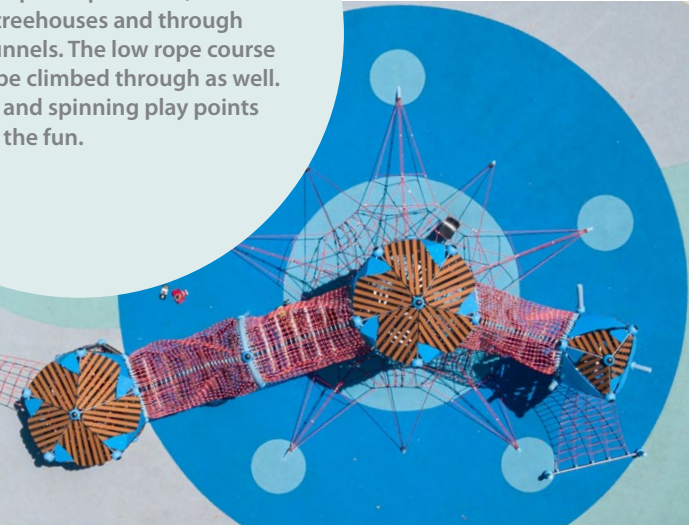


Backyards Linear Park

Rancho Mission Viejo, CA



With its colors, this playground gives you a vibe of the sea. The kids can climb up the spatial net, into the little treehouses and through the net tunnels. The low rope course wants to be climbed through as well. Swinging and spinning play points round off the fun.



Larry Gury Community Park

Sacramento, CA



Our Neptun spatial net structure offers different access options: a Rubber Ramp, a Jungle Bridge or a Loop Rope. Once you reached the top, you can enjoy the great view and slide down the Tunnel Slide. A Mini Mars connected to a Spoo is fun for the smaller ones.



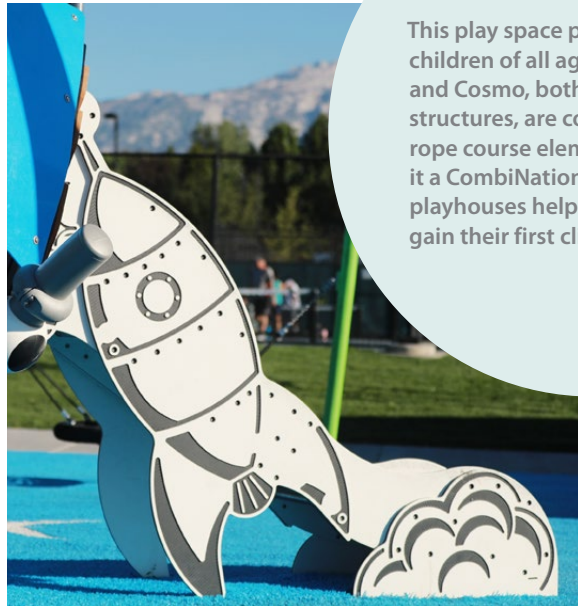


Harvey Park

Cedar Hills, UT



This play space provides fun for children of all ages. A big Pegasus and Cosmo, both spatial net structures, are connected to low rope course elements, which makes it a CombiNation. The two Spoo playhouses help younger users to gain their first climbing experience.

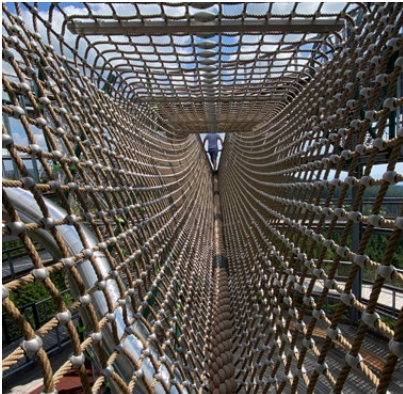


Waldwipfelweg

St. Englmar, Germany



This project shows the alternate ascent up a tower through net tunnels, bridges and arches. The 33 feet tall DNA Tower winds up and almost sticks out of the tower with its posts. Two planar nets at the highest point of the steel tower grant a view 57 yards into the depths.





Aventura Medebach, Germany



Europe's longest climbing facility is over 183 yards long and combines a lot of different towers connected by various bridges and balancing elements. Endless fun on a seemingly endless climbing path. The highest tower is over 25 feet tall – what a great view over the hill!



Oquirrh Park Salt Lake City, UT



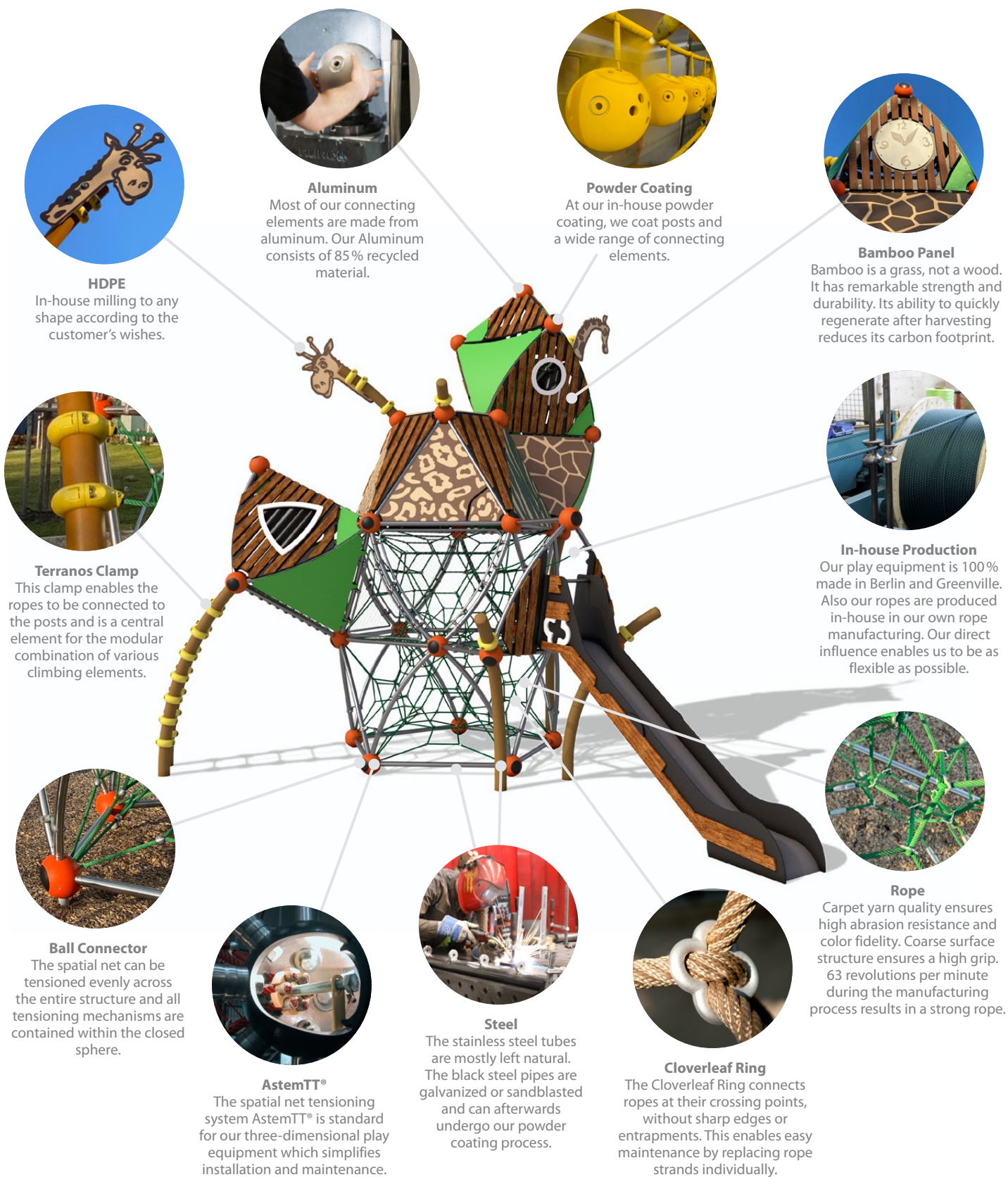
This diverse playground has an adventure waiting for every child. Whether big or small, this park has it all! The highlight of this playground is the giant CombiNation, which can be climbed in one piece. The two spatial net structures DNA Tower and Neptun are connected by a net tunnel at a height of almost 26 feet.



Technology & Materials

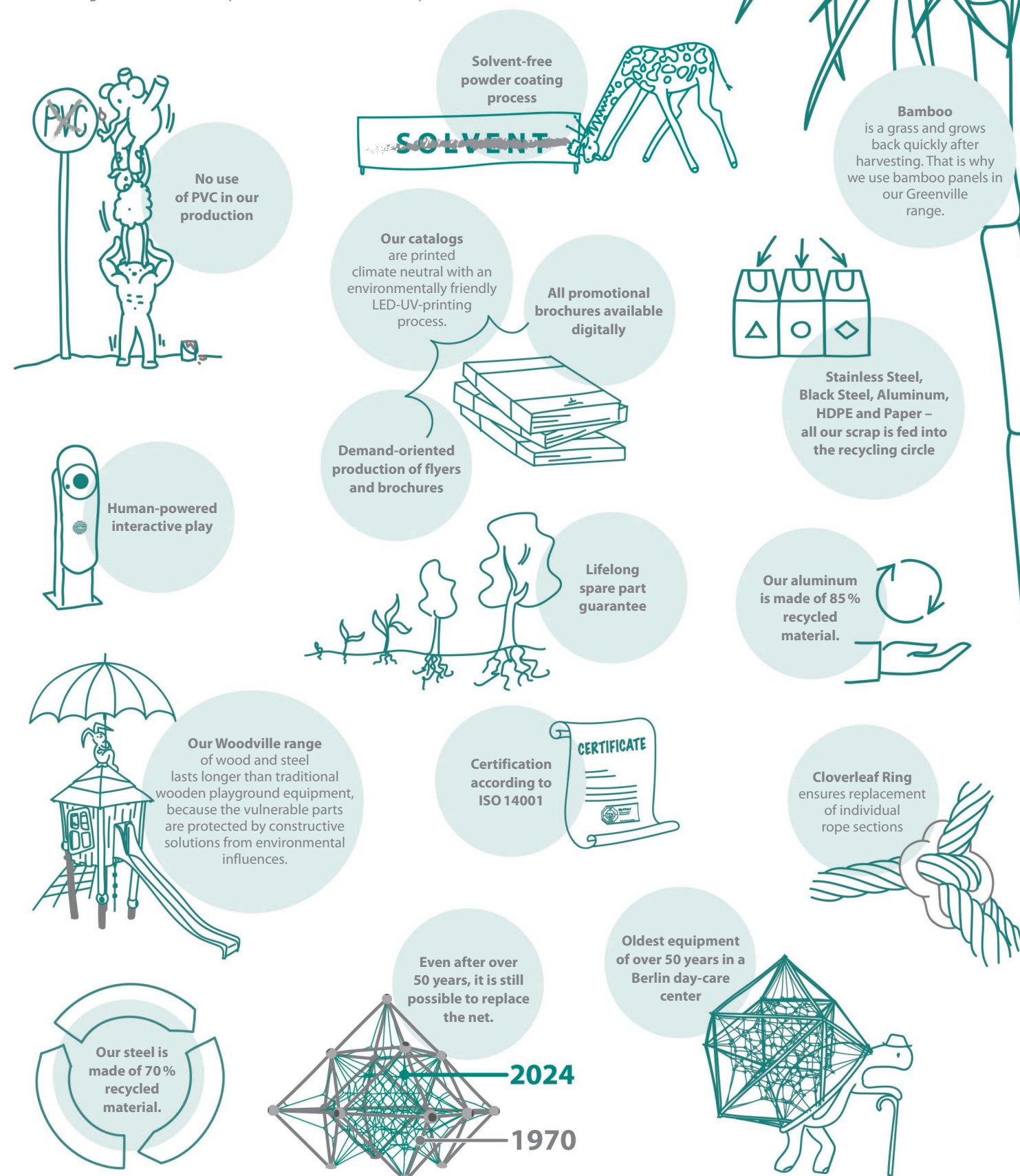
Through the combination of careful material selection and the right dimensions of all components, we achieve a high loading capacity throughout our product range. All load bearing elements of our Framework system are corrosion resistant. The ropes have been manufactured using materials with proven durability under

extreme weather conditions and high play frequency. Our lifetime spare parts guarantee ensures that even after 50 years, our play equipment remains attractive for users. All relevant standards, ASTM F1487, CSA Z614 and EN 1176, are adhered to and guarantee maximum safety.



Sustainability

High-quality materials and first-class processing make our playground equipment robust and long-lasting. This protects users and the environment, saving resources and follow-up costs. Our powder coating process is solvent-free, and all our products meet and exceed the regulations for lead in paint, lead in substrate and phthalates.



Have Fun while playing safe

“That’s pretty high up here! Can I do it? Do I dare?” In those moments at the playground, when children question themselves, they learn to recognize and cope with hazards. These learning processes are essential for children later in life. Whether at the wheel of a car, on the slopes on a skiing holiday, or the ladder at work – every day, we encounter risks requiring the adequate self-assessment. Therefore, mastering new challenges and taking personal responsibility should be learned at an early age. The playground is the perfect place for it.

The American Standard ASTM and the European Safety Standard DIN EN 1176 specify requirements for playground equipment that are intended to protect children from unpredictable, unforeseeable hazards and accidents with disabling or fatal consequences. At the same time, the standards acknowledge a certain level of risk by stating that “risk-taking is an essential feature of play provision” and play provision should aim at offering children “the chance to encounter acceptable risks as part of a stimulating, challenging and controlled learning environment.” On the other hand, overprotectiveness can lead to playgrounds completely losing their learning function.

Since the standards came into existence, serious accidents on European and American children’s playgrounds have become extremely rare. As a member of the Standards Committees, Berliner Seilfabrik participated in shaping the standard in the field of the spatial net due to its expertise. The following three essential findings are of particular importance:



Photo: © Specified Play Equipment Co.

- 1 The playing child has at least three contact points on the equipment to move forward.
- 2 Involuntary falls through are not possible with a suitable mesh size.
- 3 With play equipment that narrows towards the top, you always fall vertically either internally into the next net section or from the most outer part of the climbing structure to the safety surfacing below.



The Benefits of Risky Play

Challenges and risky experiences during play are extremely important for a child’s development. Here, children acquire their skills and competencies that prepare them for adulthood.

Ellen Sandseter, an associate professor at Queen Maud University, claims that risky play is appropriate and perfectly normal for a child’s development due to the anti-phobic effect. If children don’t have the opportunity to play risky games, they will never get an experience in handling anxiety-provoking situations: “Fear caused by maturational and age relevant natural inhibition is reduced as the child experiences a motivating thrilling activation, while learning to master age adequate challenges.”

“Hindering children from partaking in age adequate risky play may result in increases in neuroticism and phobias in adulthood.”

If children lack risky experiences, there is a chance they will grow up anxious and unprepared for real life. According to the Norwegian psychologist, it would be much worse than a broken arm or a bruise.

Children cope with increasingly hazardous situations step by step and thereby gain risk competence, self-confidence, and the ability to face and navigate difficulties. Risky play also promotes social behavior. For example, children help each other out when the climbing gets difficult by giving the climbers clues about their next moves. In addition, risky playgrounds encourage children to be more active, compared to monotonous playscapes that are less stimulating for physical activity.



Photo: © Specified Play Equipment Co.

With play equipment that looks challenging, certain risks can be easily recognized. As a result, users are deliberately more cautious. If children overcome the obstacle too quickly, they start looking for the next challenge. Then adjacent rooftops or construction sites, offering more thrills but posing greater dangers at the same time, draw their attention. David Ball, professor of risk management at Middlesex University in London, states that too many safety measures prevent older children from going wild on playgrounds. They look for more dangerous places or abandon healthy exercises altogether. Thus, effective protection against serious accidents is not about eliminating risks but making them visible. “The risk is that there is ‘no risk,’” sums up Anita Bundy from the University of Sydney.

We strive for an optimal balance between safety and age appropriate, predictable risks for these reasons. Therefore, playgrounds turn into places of learning where children learn how to spot and control dangers, master stressful situations, and take personal responsibility. It is the only way for children to prepare for the great adventure of life.



The Inclusive Playground

Creating the ideal inclusive play space requires a wide range of play and usage options. When planning, you need to take into account all types of abilities, physical and mental, as well as developmental. As a manufacturer of play equipment, we have set a goal for ourselves to develop as many varied solutions as possible for inclusive play spaces and thereby enabling all children – with and without impairments – to play together in diverse ways.

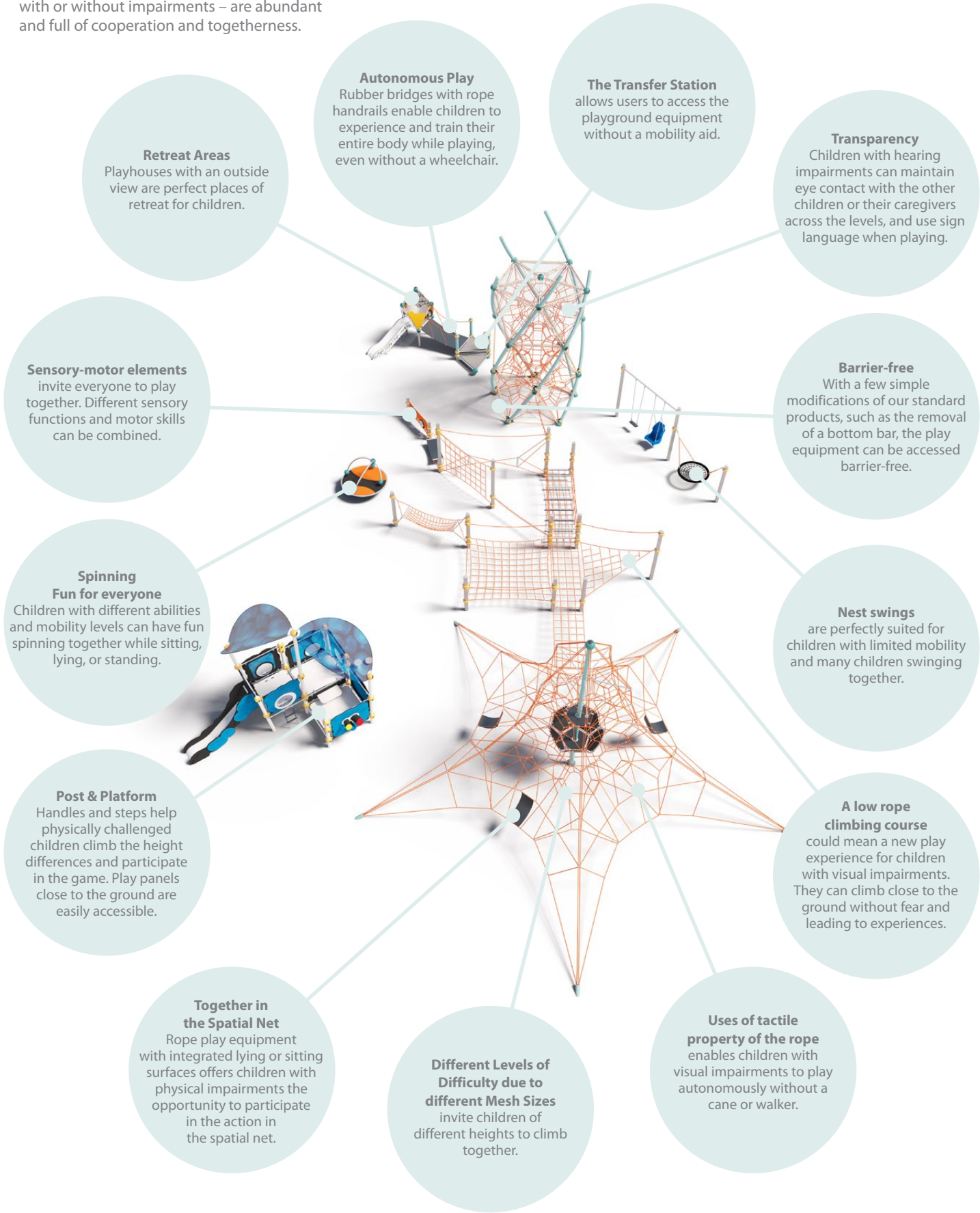


Learn more in “The Inclusive Playground – A Rewarding Challenge”, a handbook to inclusive play spaces, appearing in collaboration with Maria Feske. It provides resources and guidelines on how to create inclusive playgrounds.



The Inclusive Potential of our Play Equipment

Designing an inclusive playground means creating places where the openness, curiosity, and impartiality of children – with or without impairments – are abundant and full of cooperation and togetherness.



Maintenance & Service

All Berliner Seilfabrik equipment requires little maintenance and involves virtually no follow up costs. Thanks to its robust construction, the equipment is extremely durable. Therefore, we guarantee our products for a period of up to 15 years.

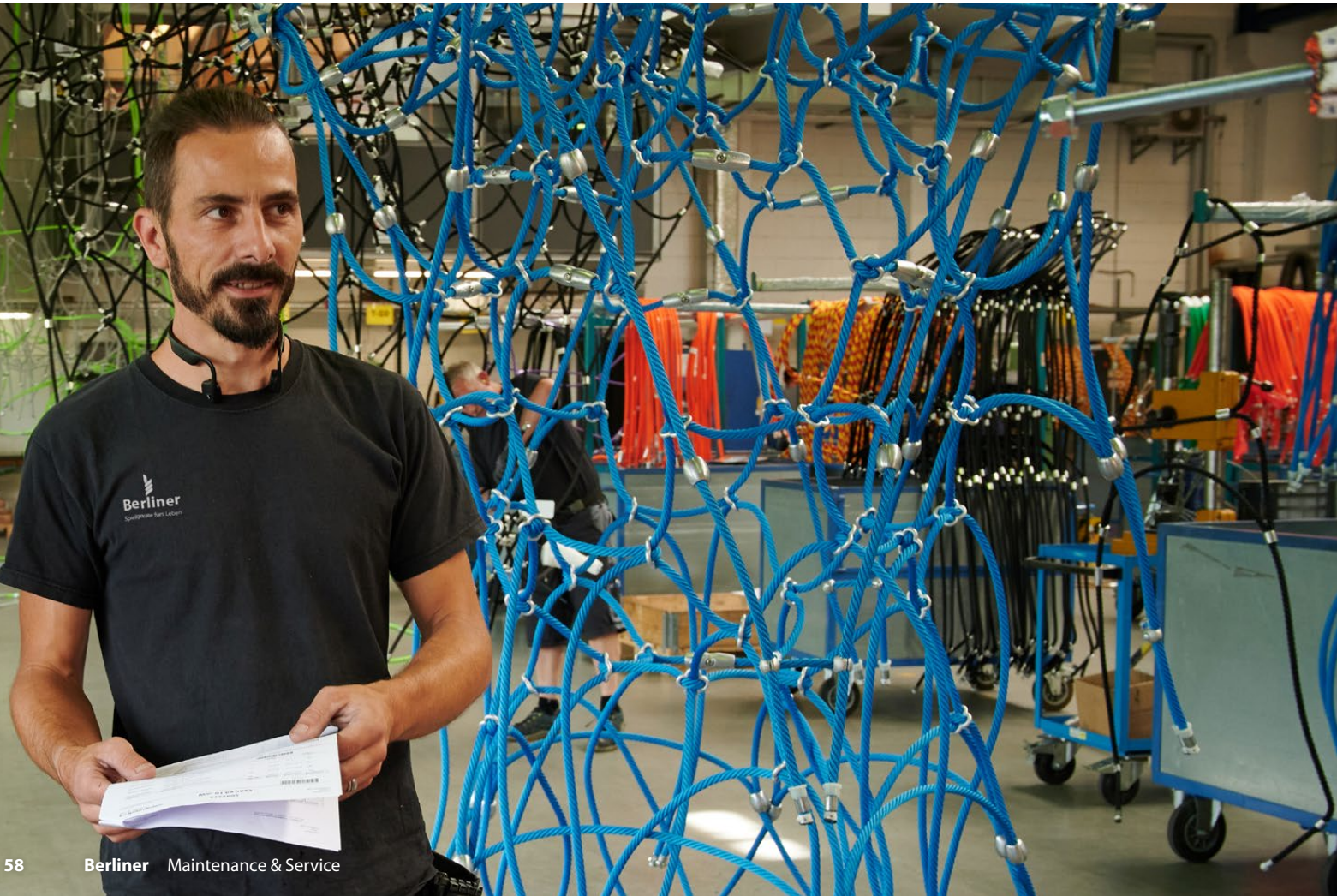
“Our comprehensive service accompanies you across all stages of development of your individual playground.”

High-quality cars must be inspected regularly, the same applies to high-quality play equipment in order to guarantee ongoing safety. For this purpose, our staff and authorized retailers are trained in the specific maintenance requirements of our equipment. Our economical maintenance contract guarantees the durability of our equipment and the safety of children, according to the ASTM Safety Standard.

Proper installation and maintenance are conducted by our trained staff or an authorized dealer. If required, we are more than glad to assist you with self-installation. If any problems arise, we will find the solution.



Installation Hotline: + 1 864 537 6263



Color Range

Colors of Ropes for 5/8" and 3/4"

	Blue
	Lilac
	Bordeaux
	Red
	Orange
	Yellow
	Lime
	Green
	Dark Green
	Black
	Silver
	Beige
	Toscana
	Salamander
	Moose
	Los Netzos
	Tempelhof

New



Published: February 2024

Matte Colors of Tubes, Posts and Balls

	RAL 9017 Traffic Black
	RAL 870-M Effect Black
	RAL 830-M Effect Grey
	RAL 9007 Grey Aluminum
	RAL 9010 Pure White
	RAL 1001 Beige
	RAL 8001 Ochre Brown
	RAL 8012 Red Brown
	RAL 3002 Carmine Red
	RAL 2009 Traffic Orange
	RAL 060 80 40 Apricot Orange
	RAL 3012 Beige Red
	RAL 010 70 30 Cherry Blossom Pink
	RAL 3015 Light Pink
	RAL 4004 Bordeaux Violet
	RAL 4005 Blue Lilac
	RAL 280 60 25 Opal Violet
	RAL 5024 Pastel Blue
	RAL 5012 Light Blue
	RAL 5017 Traffic Blue
	RAL 5021 Water Blue
	RAL 6028 Pine Green
	RAL 6034 Pastel Turquoise
	RAL 150 80 30 Bright Green
	RAL 6021 Pale Green
	RAL 120 70 75 Lime
	RAL 1028 Melon Yellow

Glossy Colors of Tubes, Posts and Balls

	RAL 9006 White Aluminum
	RAL 2009 Traffic Orange
	RAL 3020 Traffic Red
	RAL 010 40 50 Cosmo Pink
	RAL 3004 Purple Red
	RAL 5022 Night Blue
	RAL 5010 Gentian Blue
	RAL 5021 Water Blue
	RAL 6009 Fir Green
	RAL 6018 Yellow Green
	RAL 100 80 80 Cosmo Yellow
	RAL 1018 Zinc Yellow

HDPE Panels 3/8"

	White
	Grey
	Black
	Dark Green
	Green
	Blue
	Yellow
	Orange
	Red
	Lilac

HDPE Panels 3/4"

	White
	Grey
	Black
	Dark Green
	Green
	Blue
	Yellow
	Orange
	Red
	Dark Red
	Lilac
	Earth
	Piano
	Water
	Stone
	Nature
	Fire

Would you like to see more great products and projects? Then discover our catalog!



Berliner
Play equipment for life



Berliner Seilfabrik
Play Equipment Corporation
96 Brookfield Oaks Drive
Suite 140
Greenville, SC 29607

T + 1 864 627 1092
F + 1 864 627 1178

info@berliner-playequipment.com
www.berliner-playequipment.com



Production on FSC Paper