

Compendium Zip



Colour Range

Matte Colours of Tubes, Posts and Balls

	RAL 9017 Traffic Black
	RAL 870-M Effect Black
	RAL 830-M Effect Grey
	RAL 9007 Grey Aluminum
	RAL 9010 Pure White
	RAL 1001 Beige
	RAL 8001 Ochre Brown
	RAL 8012 Red Brown
	RAL 3002 Carmine Red
	RAL 2009 Traffic Orange
	RAL 060 80 40 Apricot Orange
	RAL 3012 Beige Red
	RAL 010 70 30 Cherry Blossom Pink
	RAL 3015 Light Pink
	RAL 4004 Bordeaux Violet
	RAL 4005 Blue Lilac
	RAL 280 60 25 Opal Violet
	RAL 5024 Pastel Blue
	RAL 5012 Light Blue
	RAL 5017 Traffic Blue
	RAL 5021 Water Blue
	RAL 6028 Pine Green
	RAL 6034 Pastel Turquoise
	RAL 150 80 30 Bright Green
	RAL 6021 Pale Green
	RAL 120 70 75 Lime
	RAL 1028 Melon Yellow

Glossy Colours of Tubes, Posts and Balls

	RAL 9006 White Aluminum
	RAL 2009 Traffic Orange
	RAL 3020 Traffic Red
	RAL 010 40 50 Cosmo Pink
	RAL 3004 Purple Red
	RAL 5022 Night Blue
	RAL 5010 Gentian Blue
	RAL 5021 Water Blue
	RAL 6009 Fir Green
	RAL 6018 Yellow Green
	RAL 100 80 80 Cosmo Yellow
	RAL 1018 Zinc Yellow






HDPE-Panels 10 mm

	Black
	Blue
	Green
	Dark Yellow
	Orange
	Red
	White
	Grey

HDPE-Panels 19 mm

	Black
	Dark Blue
	Dark Green
	Green
	Yellow
	Orange
	Red
	Dark Red
	White
	Lilac

HDPE-Panels Colour Mix 19 mm

	Earth
	Piano
	Water
	Stone
	Nature

Colours of Ropes for 16 mm and 18 mm

	Blue
	Lilac
	Bordeaux
	Red
	Orange
	Yellow
	Lime
	Green
	Dark Green
	Black
	Silver
	Beige
	Toscana
	Salamander
	Moose
	Los Netzos
	Tempelhof

New



Berliner Seilfabrik

Play equipment for life

The first steps towards Berliner Seilfabrik were made in 1865, when a factory producing ropes for the Berlin elevator industry was founded. The quality of the Berliner ropes gained a worldwide reputation. In the early 70s, we created the first spatial net climbing structure and began the world's first production of rope play equipment. However, the rope play equipment division initially remained very small and played a minor role as a side-line business. But even then, Karl Köhler who joined the company as a plant engineer in the late 70s worked with great enthusiasm on the further development and production of playground equipment. When the Bavarian parent company moved out of West Berlin and intended to give up its production facilities in 1995, Karl Köhler, then already Managing Director of Berliner Seilfabrik, seized the opportunity and took over the traditional rope factory in a management buyout.

Since then, Berliner Seilfabrik has been developing and producing exclusively playground equipment and has made a name for itself worldwide. Today, Berliner Seilfabrik is an international play equipment manufacturer and a full-service provider with around 150 employees, a subsidiary in the USA, and a strong partner network across the globe. Children can climb and play on Berliner structures across 56 countries. Our family-owned company, based in Berlin's Reinickendorf district, is being run by David Köhler, the second generation of the Köhler family, with the utmost dedication and commitment. We are proud to be one of the world's leading and recognised manufacturers of playground equipment, producing high-quality, unique, modern, and versatile play structures with high play value in Berlin, while continuing to grow through constant development and innovation of our products.

Content:

3

Berliner Seilfabrik




10

Product Groups

38

References

Our Headquarters and Production based in Berlin

-  Plant 1 – Rope Production, Rope Assembly
-  Plant 2 – Powder Coating, Packaging
-  Plant 3 – Steel Construction, Mechanical Engineering

The Berliner Creative Center, with planning, design and development, the administrative areas, such as purchasing, sales, controlling, human resources and marketing, as well as quality department and the management are also located in Plants 1 and 3.

Sales Hotline:
+ 49 (0)30 41 47 24 67

info@berliner-playequipment.com
www.berliner-playequipment.com



Technology & Materials

Through the combination of careful material selection and the right dimensions of all components, we achieve a high loading capacity throughout our product range. All load bearing elements of our Frameworkx system are corrosion resistant. The ropes have been manufactured using materials with proven durability under extreme weather conditions and high play frequency. Our lifetime spare parts guarantee ensures that even after 50 years, our play equipment remains attractive for users. All relevant standards, ASTM F1487, CSA Z614 and EN 1176, are adhered to and guarantee maximum safety.

Cloverleaf Ring

Because of its elaborate shape, the Cloverleaf Ring connects ropes at their crossing points, without sharp edges or entrapments. This allows for easy maintenance, by replacing rope strands individually. The Cloverleaf Ring is made in a forging die, which optimizes the aluminium fiber course to make the ring durably long-lasting. The Cloverleaf Ring represents our ingenuity.

Ball Connector

In early 2002, we introduced a new tensioning mechanism, AstemTT. The spatial net tensioning system lies within an aluminium ball, sealed with a durable hard rubber cap. This rope tensioning technology is standard for our three-dimensional play equipment. Aside from the intelligent mechanism and harmonious integration, AstemTT simplifies installation. The spatial net can be tensioned evenly across the entire structure and all tensioning mechanisms are contained within the closed sphere, making them inaccessible for users.



At our in-house powder coating, we coat a wide range of connecting elements made of aluminium.

Materials

High-quality materials and first-class processing make our playground equipment robust and long-lasting. This protects users and the environment, saving resources and follow-up costs. Our powder coating process is solvent-free, and all our products meet and exceed the regulations for lead in paint, lead in substrate and phthalates.

Bamboo

For our Greenville playhouses, we use bamboo panels. Bamboo is a grass, not a wood. It has remarkable strength and durability; and its ability to quickly regenerate after harvesting reduces its carbon footprint.

HDPE

For the processing of HDPE, we can mill the panels in-house to any shape according to the customer's wishes. In addition, HDPE panels are also used for our Greenville, Spooky Rookie and LevelUp series as a base and allow us to use the bamboo, wooden panels, and perforated panels as cladding for the houses and platform structures.

Steel

For our playground equipment, we use tubes made of stainless steel or black steel. The stainless steel tubes are mostly left natural. The black steel pipes are galvanized or sandblasted and can afterwards undergo our powder coating process.

Aluminium

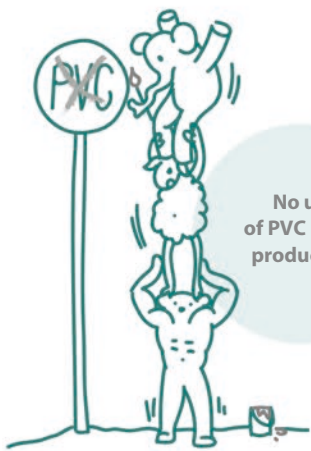
Most of our connecting elements are made from aluminium, e.g. the ball connectors of the framework or the polynode as well as the Terranos-Clamps. These clamps are mainly used in our low rope courses and enable us to attach ropes to the posts.



Ropes

- 1 direct influence on our own manufacturing process enables us to be as flexible as possible
- 2 carpet yarn quality ensures high abrasion resistance and colour fidelity
- 3 coarse surface structure ensures a high grip
- 4 63 revolutions per minute (63 rpm) results in a strong rope

Sustainability



No use of PVC in our production

Solvent-free powder coating process

~~SOLVENT~~

Our catalogues are printed climate neutral with an environmentally friendly LED-UV-printing process.

All promotional brochures available digitally

Demand-oriented production of flyers and brochures



Human-powered interactive play



Lifelong spare part guarantee

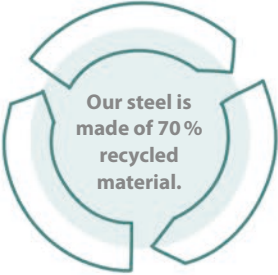


Our Woodville range of wood and steel lasts longer than traditional wooden playground equipment, because the vulnerable parts are protected by constructive solutions from environmental influences.

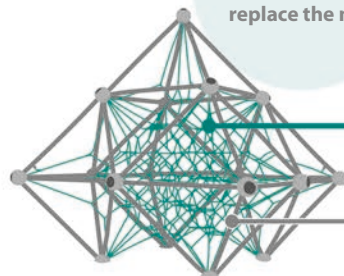
Certification according to ISO 14001



Cloverleaf Ring ensures replacement of individual rope sections



Our steel is made of 70 % recycled material.

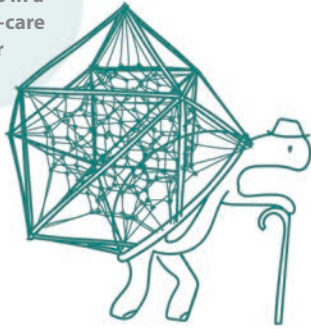


Even after 50 years, it is still possible to replace the net.

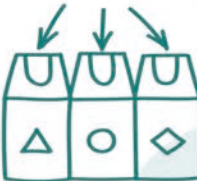
2020

1970

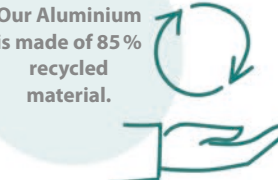
Oldest equipment of 50 years in a Berlin day-care center



Bamboo is a grass and grows back quickly after harvesting. That is why we use bamboo panels in our Greenville range.



Stainless Steel, Black Steel, Aluminium, HDPE and Paper – all our scrap is fed into the recycling circle



Our Aluminium is made of 85 % recycled material.

Have Fun while playing safe

“That’s pretty high up here! Can I do it? Do I dare?” In those moments at the playground, when children question themselves, they learn to recognise and cope with hazards. These learning processes are essential for children later in life. Whether at the wheel of a car, on the slopes on a skiing holiday, or the ladder at work – every day, we encounter risks requiring the adequate self-assessment. Therefore, mastering new challenges and taking personal responsibility should be learned at an early age. The playground is the perfect place for it.

The American Standard ASTM and the European Safety Standard DIN EN 1176 specify requirements for playground equipment that are intended to protect children from unpredictable, unforeseeable hazards and accidents with disabling or fatal consequences. At the same time, the standards acknowledge a certain level of risk by stating that “risk-taking is an essential feature of play provision” and play provision should aim at offering children “the chance to encounter acceptable risks as part of a stimulating, challenging and controlled learning environment.” On the other hand, overprotectiveness can lead to playgrounds completely losing their learning function.

Since the standards came into existence, serious accidents on European and American children’s playgrounds have become extremely rare. As a member of the Standards Committees, Berliner Seilfabrik participated in shaping the standard in the field of the spatial net due to its expertise. The following three essential findings are of particular importance:



Photo: © Specified Play Equipment Co.

- 1 The playing child has at least three contact points on the equipment to move forward.
- 2 Involuntary falls through are not possible with a suitable mesh size.
- 3 With play equipment that narrows towards the top, you always fall vertically either internally into the next net section or from the most outer part of the climbing structure to the safety surfacing below.



The Benefits of Risky Play

Challenges and risky experiences during play are extremely important for child’s development. Here, children acquire their skills and competencies that prepare them for adulthood.

Ellen Sandseter, an associate professor at Queen Maud University, claims that risky play is appropriate and perfectly normal for a child’s development due to the anti-phobic effect. If children don’t have the opportunity to play risky games, they will never get an experience in handling anxiety-provoking situations: “Fear caused by maturational and age relevant natural inhibition is reduced as the child experiences a motivating thrilling activation, while learning to master age adequate challenges.”

“Hindering children from partaking in age adequate risky play may result in increases in neuroticism and phobias in adulthood.”

If children lack risky experiences, there is a chance they will grow up anxious and unprepared for real life. According to the Norwegian psychologist, it would be much worse than a broken arm or a bruise.

Children cope with increasingly hazardous situations step by step and thereby gain risk competence, self-confidence, and the ability to face and navigate difficulties. Risky play also promotes social behavior. For example, children help each other out when the climbing gets difficult by giving the climbers clues about their next moves. In addition, risky playgrounds encourage children to be more active, compared to monotonous playscapes that are less stimulating for physical activity.



Photo: © Specified Play Equipment Co.

With play equipment that looks challenging, certain risks can be easily recognised. As a result, users are deliberately more cautious. If children overcome the obstacle too quickly, they start looking for the next challenge. Then adjacent rooftops or construction sites, offering more thrills but posing greater dangers at the same time, draw their attention. David Ball, professor of risk management at Middlesex University in London, states that too many safety measures prevent older children from going wild on playgrounds. They look for more dangerous places or abandon healthy exercises altogether. Thus, effective protection against serious accidents is not about eliminating risks but making them visible. “The risk is that there is ‘no risk,’” sums up Anita Bundy from the University of Sydney.

We strive for an optimal balance between safety and age appropriate, predictable risks for these reasons. Therefore, playgrounds turn into places of learning where children learn how to spot and control dangers, master stressful situations, and take personal responsibility. It is the only way for children to prepare for the great adventure of life.



The Inclusive Playground

Creating the ideal inclusive play space requires a wide range of play and usage options. When planning, you need to take into account all types of abilities, physical and mental, as well as developmental. As a manufacturer of play equipment, we have set a goal for ourselves to develop as many varied solutions as possible for inclusive play spaces and thereby enabling all children – with and without impairments – to play together in diverse ways.



Bright and vibrant colours provide a visual sensory experience and increase children's interest in activity and movement.

Inclusive All-rounder: LevelUp

Photo: © oikotie

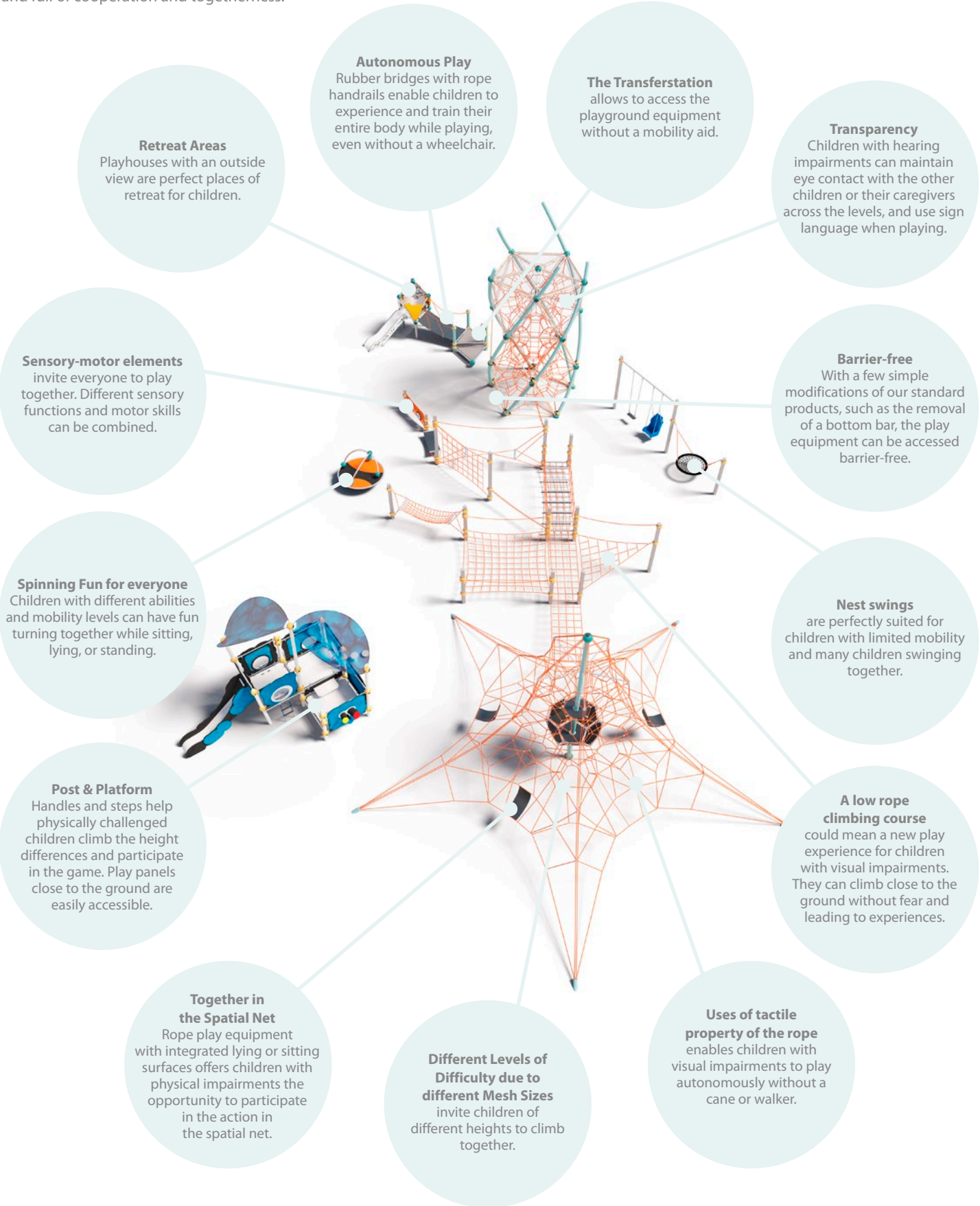


Learn more in “The Inclusive Playground – A Rewarding Challenge”, a handbook to inclusive play spaces, appearing in collaboration with Maria Feske. It provides resources and guidelines on how to create inclusive playgrounds.



The Inclusive Potential of our Play Equipment

Designing an inclusive playground means creating places where the openness, curiosity, and impartiality of children – with or without disabilities – are abundant and full of cooperation and togetherness.





LevelUp

Tradition and innovation – the old established idea of towers and platforms redefined



With LevelUp, the traditional idea of towers and platforms is supplemented by innovative add-on components and inclusive play elements. The well-known playground concept in innovative design combines technical finesse with high-quality standards and offers every playground planner unexpected possibilities with integrated shade structures. New organic alignments are created by the seemingly randomly chosen tilted posts.



Transferstation
Supportive handles and steps to climb the differences in height



Roof
Printable on both sides, dirt-repellent, recyclable and UV light resistant mesh fabric in the leaf-like roof construction



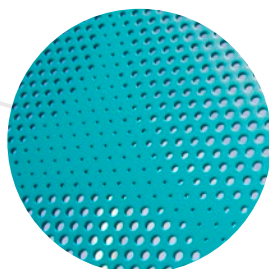
Play Panels
Integrated sensory-motor play panels located close to the ground to support motor and auditory development



Polynode
Individually coloured, four-part ball clamp to hold the horizontal tubes without any screw connection



Add-on Components
Numerous attachments which can be installed in almost every position



Perforated Plates
Special three-dimensional look due to the individually definable perforated patterns



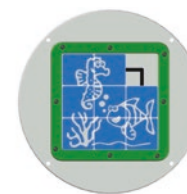
34
Various Add-on Components



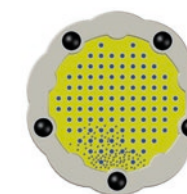
Honolulu, USA



Solar Explorer
Like an astronaut, you can land the spaceships on the planets.



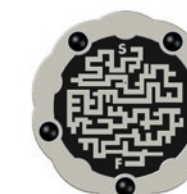
Tile slide Fish
The fish motif becomes visible when all parts are arranged correctly.



Tumble Turn
The stainless steel balls move merrily according to the direction of rotation.



Chimes
Play the different tones according to their colours with the melodious chimes.



Spin Maze
Move the ball with the spinning disc and find the exit of the maze.

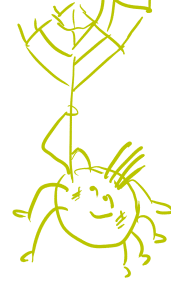


Bongos
These bongo drums set the rhythm.



Spooky Rookies

Play equipment for climbing beginners



The playground equipment of the Spooky Rookies product group is designed for use in nurseries, day-care centers, and public playgrounds. They are specially adapted to the needs of toddlers and their psychomotor development. There are three Spooky Rookies subgroups:



Wonderwalls

Between three or four walls in imaginative themed designs, all play units create several play worlds, which are connected by windows and passages.



Spoo

Our cuddly playhouses are available with a wide variety of add-on components and can be connected by different elements, such as rope or rubber bridges.

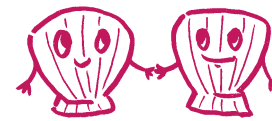


Roo

With our larger playhouses, various play functions can be added, such as a Sand Table, Tic-Tac-Toe, Memo-Play and more.



Bernau by Berlin, Germany

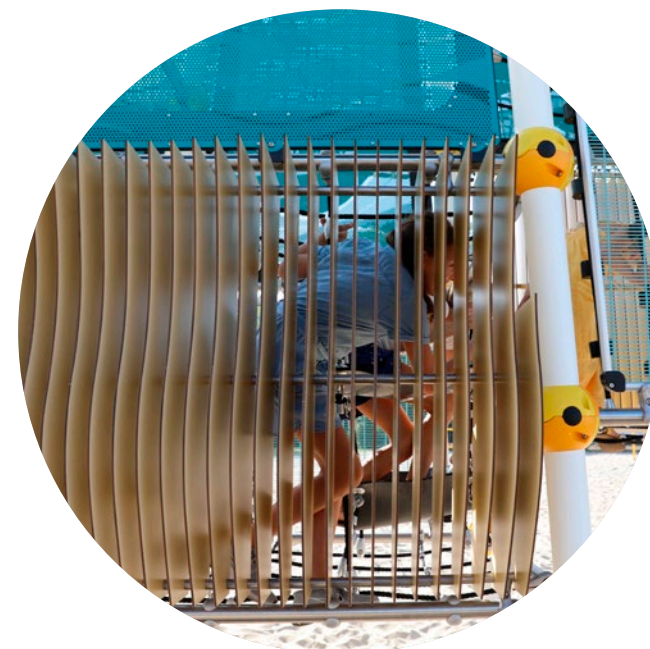
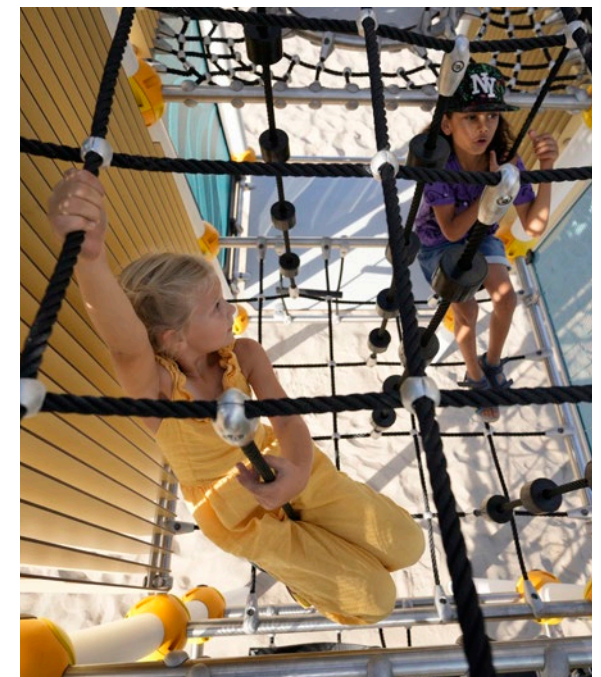


WaggaWagga

Unique design and high play volume on a narrow footprint



Our latest product line WaggaWagga offers a distinctive design as well as a large play volume on a footprint of 1.3 by 5.8 metres only. The largely closed façade results in a small fallzone and reduces the amount of safety surfacing needed. WaggaWagga can be used particularly well when space is limited but a variety of play functions are required. The exterior design can be freely chosen: whether the new innovative transparent option Joe's Grid, themed perforated panels or three-dimensional wave-shaped panels made of HPL – Let your imagination run wild! Various play elements inside ensure maximum fun.





Greenville

Bamboo treehouses, Rope Playhouses and Towers – this product group is setting a new standard.

Our special product group Greenville adds an element of natural design with the addition of bamboo panels. Treehouses, Rope Playhouses or Towers can be used as stand-alone structures or can be extended by Bridges, Tunnels, and other elements.



Triitopia

Behind the seemingly random construction lies a highly modular system that allows every Triitopia to be custom designed.



Triis

These beautifully designed treehouses in different sizes can be equipped with various add-ons or can be connected to each other.



Towers

The Towers provide height that creates maximum play volume within a smaller footprint. In addition, they can be combined in endless configurations.



Playhouses

Our playhouses Bam, Boo and LaGrange are perfect for retreats and have a higher play value than classic playhouses due to the spatial net.



Berlin, Germany



Porto Alegre, Brazil

Photo: © aikotie



Berlin, Germany



Ellendale, Australia



Melbourne, Australia



Horsham, England



The new product LaGrange is the largest playhouse of the Greenville line in an exciting design with numerous climbing elements inside.

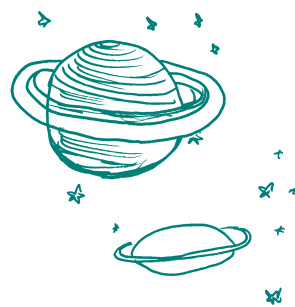


Berliner Greenville



Univers

The universe of spatial net structures in a wide spectrum of colours, shapes and sizes

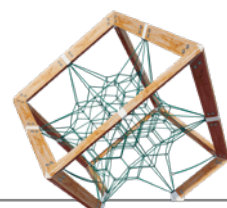


Univers are spatial net structures with an outer framework and a three-dimensional net inside. All play structures in this product group are equipped with the AstemTT tensioning system. This allows optimal tensioning of the net and makes re-tensioning a simple task. There are six Univers subgroups:



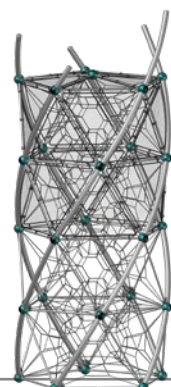
Lunia

Our new Lunia makes climbing wishes come true. It is available in two different sizes. The huge spatial net inside can be reached via different ascent possibilities, such as Climbing Plates or Rope Ladders.



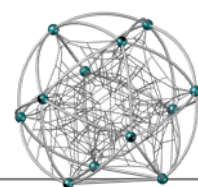
Joe Brown Collection

The "Joe Brown Collection" is the world's first rope play equipment with an outer structure made of wood.



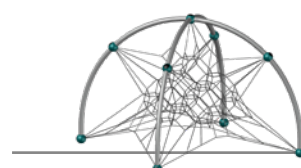
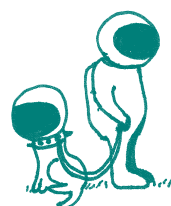
DNA Towers

The DNA Towers are graceful towers containing three-dimensional climbing nets and provide maximum play volume on a small footprint.



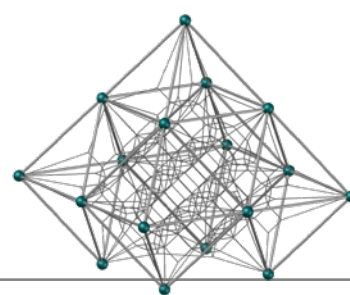
Cosmo

The first totally spherical rope play structure offers exciting play options. Apart from the basic system, Cosmo stands out due to its many freely selectable add-ons.



Quadrifol

The Quadrifol is a net climber with the spatial net suspended in a cross arch. This play equipment is not only easy to install and extremely low-maintenance, but also impresses with its reduced and elegant design.



Classics

These original spatial nets were born as a play concept more than 50 years ago and are still popular after several generations of play.



Lunia's outer membrane can be printed individually.



The Globe (Joe Brown Collection) in Romsey, England



Der Cube L (Joe Brown Collection) in Berlin, Germany

All Univers play structures are equipped with our innovative AstemTT tensioning system.

Futuristic design combined with natural wood material



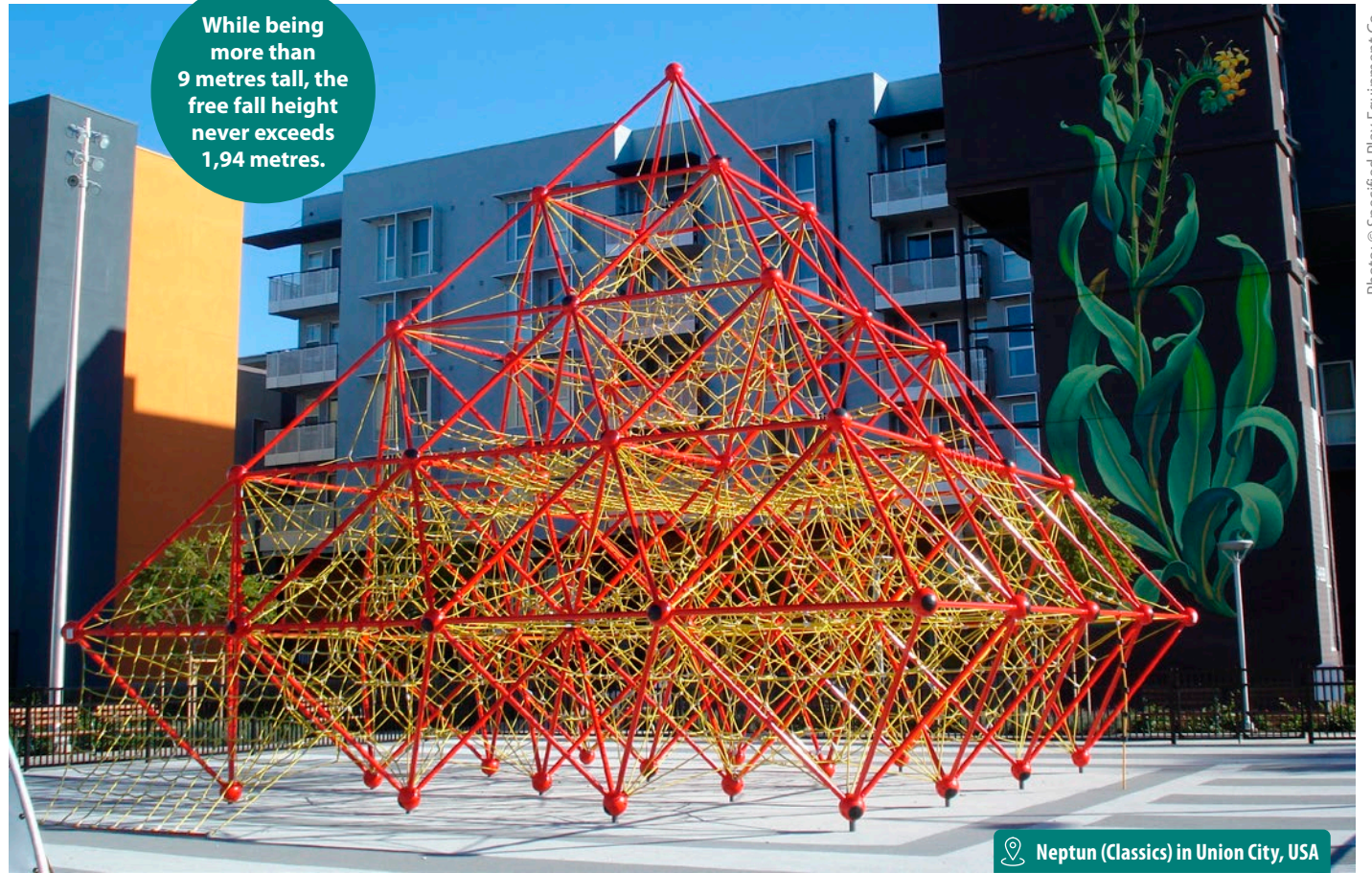
📍 DNA Tower in Aarhus, Denmark



📍 DNA Combi in Wiesbaden, Germany



📍 Spaceball in Spital am Pyhrn, Austria



While being more than 9 metres tall, the free fall height never exceeds 1,94 metres.

📍 Neptun (Classics) in Union City, USA



📍 Venus (Classics) in Amsterdam, Netherlands



📍 Neptun (Classics) in Porto Alegre, Brazil



Quadrifol



📍 Cosmo in San Francisco, USA

Various solutions for your rooftop

Photo: © Specified Play Equipment Co.



Mini Mars (Classics)



Cubiron (Joe Brown Collection)





Twist & Shout

Customisable play sculptures with planar nets and multiple add-on possibilities



Twist & Shout are not only great fun, but also small works of art that can be completely customised. Whether the helical climbing structure Twist is 5 or 50 metres long, the net provides continuous climbing fun for young and old alike. Shout's steel frame runs parallel. How they zig or zag is completely up to your own creativity!



Cloverwood

The frame is made of laminated larch, across which the rope netting is stretched.



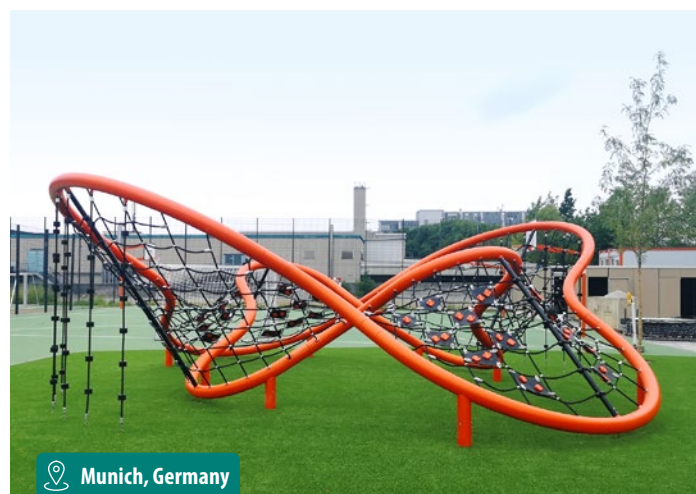
Twist

Arches of different sizes can be combined at various angles.

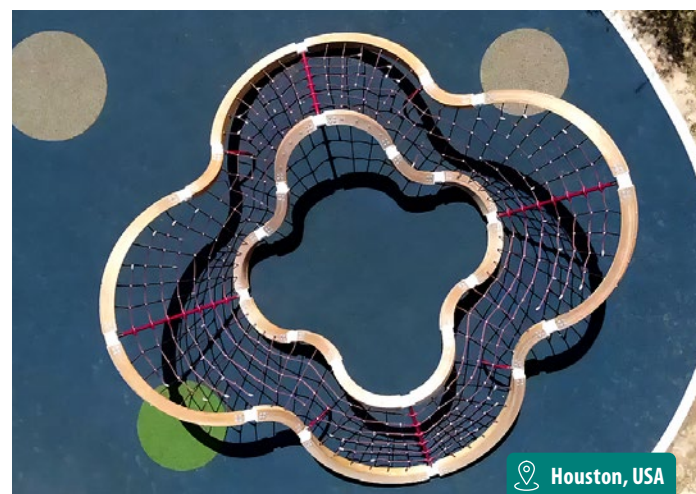


Shout

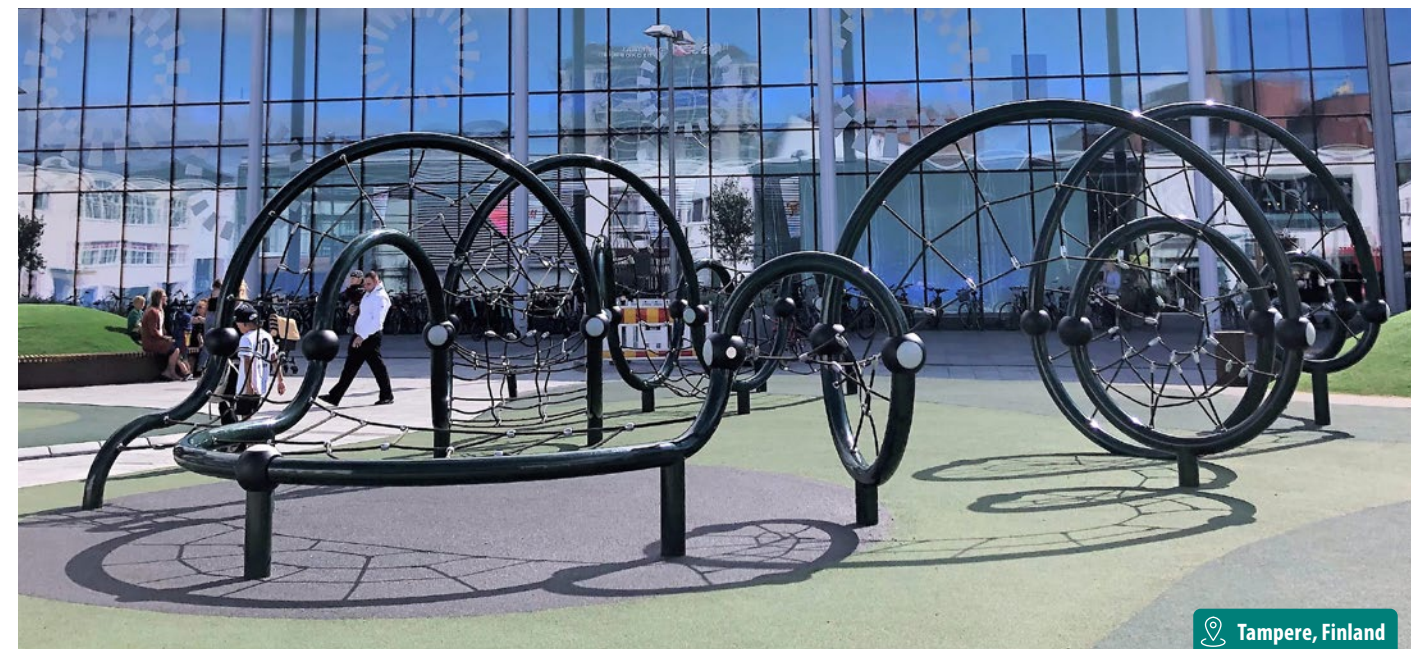
The undulating curvatures result in a unique climbing environment.



Munich, Germany



Houston, USA



Tampere, Finland



Budapest, Hungary



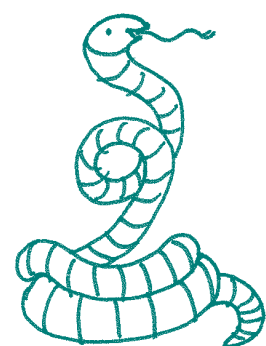
San Francisco, USA



Perth, Australia

Berliner Twist & Shout

21



The patented Charlotte-Connector lets the rope disappear in the frame and simplifies the tensioning process.

Terranos & Terranova

Turn any space into a netscape and low rope course.

The Terranos & Terranova low rope courses offer plenty of space for climbing, swinging and dangling, chatting and relaxing. Thanks to individual planning, any area can be transformed into a net landscape. An infinite number of climbing elements, consisting of ropes attached close to the ground, allow climbing and balancing fun for children with different abilities.



Terranos

Straight posts in a classic design



Terranova

Curved posts in an organic design



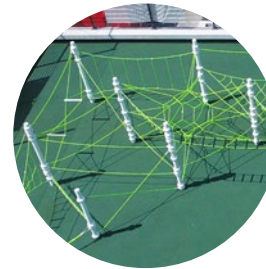
Terranos Clamp

Connection of various rope elements to straight and curved posts in different ways



Themes

Individually themed HDPE panels



Unique Playscape

Possibility to create your own climbing landscape in just a few steps



Horsham, England



Porto Alegre, Brazil

Photo: © ilkotie



Budapest, Hungary



Budapest, Hungary



Trypiti, Greece



Copenhagen, Denmark



Individual integration of the play equipment into the surroundings thanks to the Terranos Clamp



Auckland, New Zealand



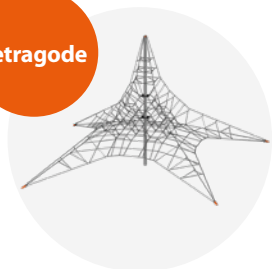
Polygodes

Central mast play structures in various shapes and sizes

There is enough space in our central mast play structures for children to enjoy the thrill of playing at great heights. The Tetragode extends from the central mast outwards in four directions to create its play space. The shape of the Pentagode offers even more space in which to climb. Its spreader bars extend outwards from the central steel mast, supporting five double ropes and giving the apparatus its characteristic appearance.



Tetragode



Four-way Tensioning



Six-strand Steel Cable



T-Connector

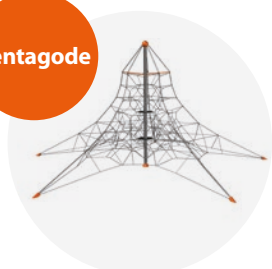


Different Heights



Protected Tensioning Technology

Pentagode



Five-way Tensioning



Tensioning Point on Top



Spreader-Bars



Double Rope



Anchor Point



12

Add a Greenville playhouse to create this PentaBoo.



Elk Grove, USA



Viersen, Germany

Capsulated tensioning technology in the foundation tube for simple assembly and maintenance



Büsum, Germany



Mexico City, Mexico

Tensioning mechanism housed within spherical capsule atop the central support mast



Berlin, Germany

HodgePodge

A variety of sturdy, durable sport and play elements

HodgePodge is an imaginative, diverse set of play equipment and elements that offer a variety of actions everywhere – even in the middle of the city: e. g., swinging, rocking, and rotating. HodgePodge play structures enrich every playground and are characterised by their enormous load capacity, technically advanced construction, and high design standards.



Swinging



Rotating



Rocking



Satellights



Mixed



Genk, Belgium



Chiguayante, Chile



Bernau by Berlin, Germany



Photo: © oikotie



Porto Alegre, Brazil

The low access height of nest swings enables all children to join the fun.



Budapest, Hungary



Greensboro, USA



San Francisco, USA

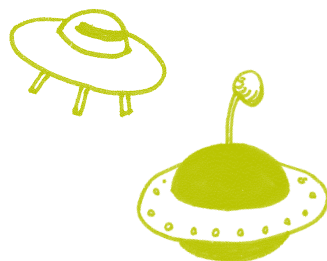
Satellights – first interactive rope play! Turn the wheel of the generator and off you go! The power supply cable runs inside the rope and drives the LEDs integrated into the discs.





UFOs

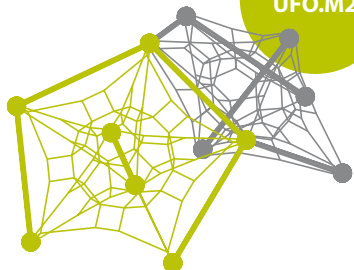
Spatial nets in pentagonal frames



The pentagonal Frameworkx frame of stainless-steel tubes – connected via hollow aluminium balls – surrounds a spatial net tensioned by means of a spreader bar. The compact UFOs can be combined to produce larger and more complex fleets.



× 1 =
UFO.M1



× 2 =
UFO.M2



× 6 =
UFO.M6

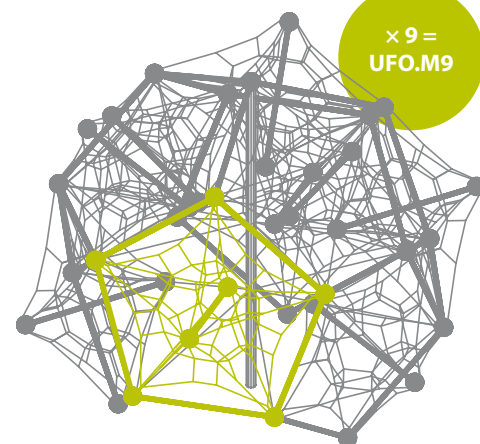
Six units together form this play paradise. The UFO.M6 fascinates with clear design, high play value, and maximum transparency.

New York City, USA

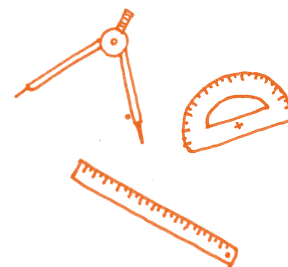


Photo: © Specified Play Equipment Co.

San Francisco, USA



× 9 =
UFO.M9



Geos

Multifunctional play domes



These structures are ideal for climbing, both inside or outside. The Geos offer enough space inside for playing soccer or as a safe play area with plenty of room for add-on components such as Hammocks, Ladders, Climbing Ropes or Net Funnels. The outer net structure as a ground-level component also guarantees inclusive play.



Malmö, Sweden



Photo: © Specified Play Equipment Co.



Berlin, Germany



Warnsdorf, Germany





Woodville

Whimsy from wood – strength from steel



In contrast to typical wooden playground units, Woodville distinguishes itself through its individual design and its durability. This is achieved through the use of high-quality materials and the hybrid design of wood and steel.



Roof

HDPE tent roof from folding formwork for a realistic shed look and protection of the wooden components



Window

High transparency thanks to the windows with oversized openings



Post

Coated steel of the two-part posts in the bottom area for protection from corrosion



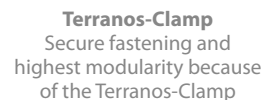
Various Sizes

Both for big and small children



Ball

System balls made of aluminium act as connecting elements between wood and steel posts



Terranos-Clamp

Secure fastening and highest modularity because of the Terranos-Clamp



Le Muy, France



Berlin, Germany

Great Fun for small Children

Early motor and psychomotor development are important for children later in life. It's important to nurture and challenge children from the earliest age. Our Spooky Rookies product group is particularly aimed at toddlers. A multitude of products from our other product groups also offer nursery children tons of fun as well as many opportunities to develop.

"Small rope nets allow young children to gain their first experience of climbing in three dimensions."

It's important to create a safe and comprehensive range of play possibilities for this age group, so they can improve their social and motor skills. Classic playground activities such as using the swing or slide are just as popular as opportunities to acquire everyday skills in role play. Having mastered one step of their development, children are keen to move straight onto the next challenge. It's exciting for young children learning to walk up and down ramps, master narrow walkways, or walk on uneven floors.

In the case of sliding, it should be possible for them to reach the slide on their own. As for climbing there, it would be beneficial to provide various levels of difficulty. Nets, ladders, ramps or even steps offer a wide variety.

Bridges with rubber membranes or small-meshed nets are very popular and train the balance for the next developmental step – whether it's standing, running, hopping, or even riding a bicycle.

Small nets offer the chance to gain initial experience in climbing in three-dimensional space. This also offers opportunity to meet another need at the same time. Children want to be high up! They enjoy the view or the overview. Here, everything looks beautiful and you're finally the tallest!



"Youngest Play Big" summarizes play equipment for toddlers. Read it online:

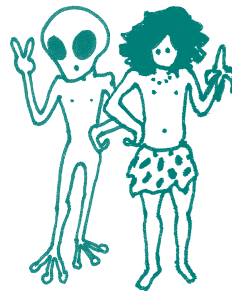


Mexico City, Mexico

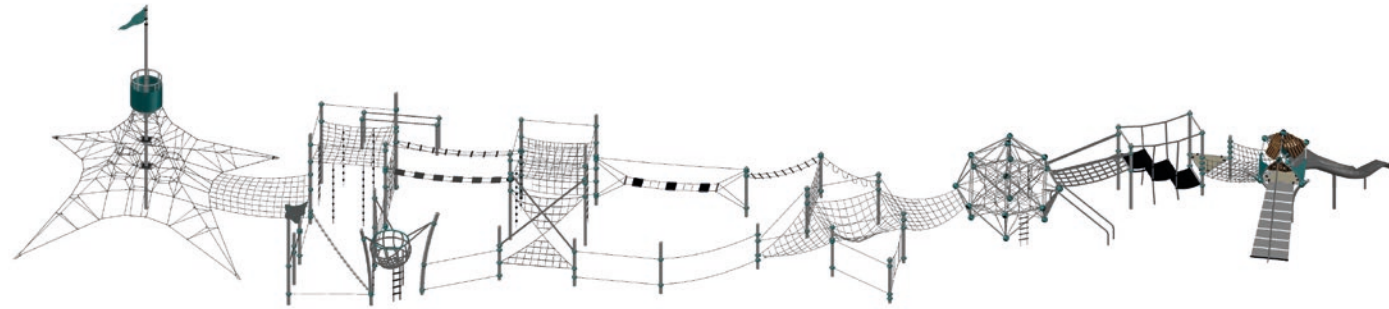


CombiNation

The clever combinations of all play systems



Varied playgrounds are a great challenge for children. When they can be climbed through in one piece, it's a real highlight. Our modular system makes it child's play to realise such installations. Since all our product groups consist of the same basic building blocks, it's also possible to combine the different playground equipment with each other effortlessly. This means that there is an almost endless range of varieties, which sets no limits to creativity.

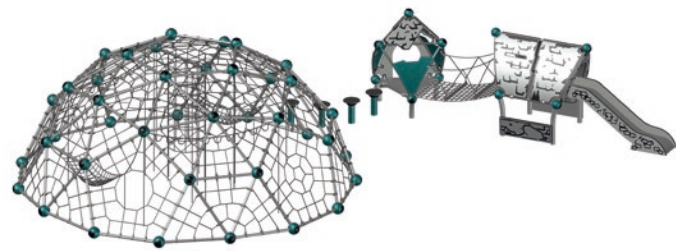


Polygodes

HodgePodge

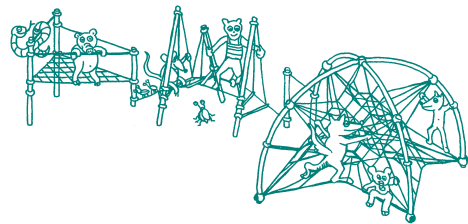
Terranos & Terranova

Univers Terranos & Terranova Greenville



Geos

Spooky Rookies



Orlando, USA



Berlin, Germany



Lichtaart, Belgium



Vancouver, Canada



Greensboro, USA



Sacramento, USA



Create your own playscape from our various product groups!



Add-on Components

A large variety of our add-on components, suitable for all product lines, offer a wide range of options to customise the play area for all age groups. With the add-on components, the playscape can become even more inclusive. Make your playground unique and choose individually from our numerous add-ons!

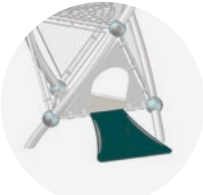


Access & Exit

Ladder



Rope Ladder



Ramp



Stairway



Access Net



Climbing Rope



Rocking Plates



Transfer Station



Net Arc



Stainless Steel Slide



Curved Concave Slide



Straight Concave Slide



Sliding

Fast Lane Slide



Curved Tunnel Slide



Banister

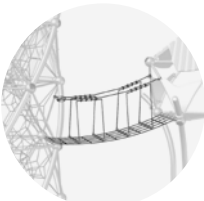


Sliding Pole



Bridges

Net Tunnel



Suspension Bridge



Rubber Bridge



Panel Bridge



Wobble Way



Chessboard Bridge



Crossed Stairway



Sway Bridge



Jungle Bridge



On Top

Leaves



Flag



Fort



Dormer



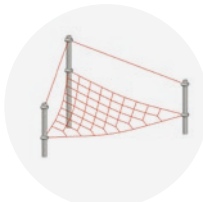
Crow's Nest with Flag



Greenville House



Shades



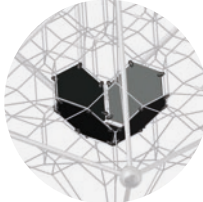
Triangular Net



Rubber Mats



Hammock



Rubber Nest



Rubber Seat



Net Sack



Relaxing

Chessboard Cube



Balancing & Dangling

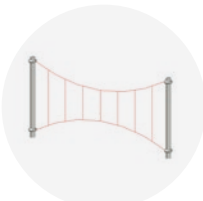
Slackline



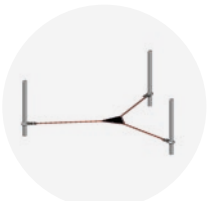
Twisted Net



Air Walk



Harp Net



Triangular Slackline



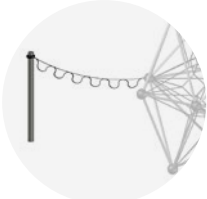
Balancing Cable with Handrail



Dangle Arc



Hand-over-Hand Ladder



Loop Rope



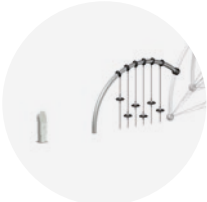
... and many more:



Small Sand Workshop



Duck Jibe



Satellites



Custom-made

Custom-made projects allow combinations in infinite ways.

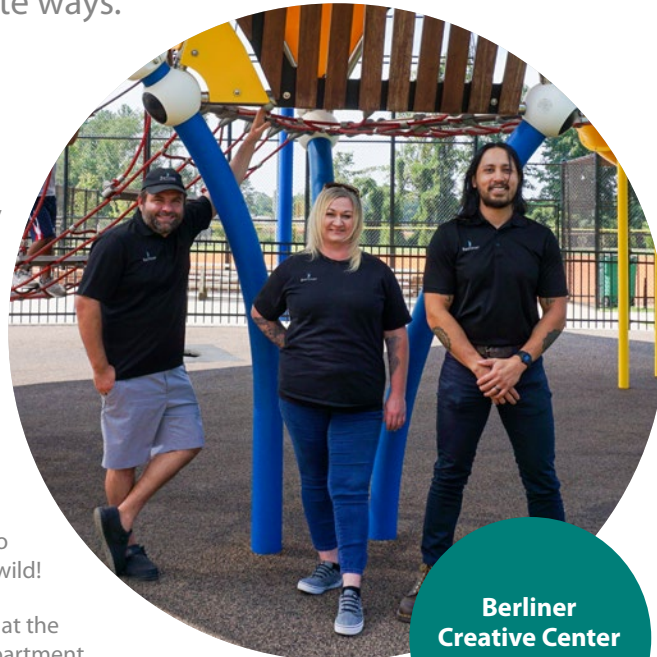


One of our greatest competitive advantages lies in the development of customised playgrounds. Whether it's an Australian bottle tree, a hot air balloon based on a work of art or the longest climbing structure – our Berliner Creative Center fulfills every architectural wish. Architects, designers, landscape planners, and engineers design customised and one-of-a-kind play sculptures, create new shapes and implement customers' wishes. This results in distinctive play landscapes which encompass customers' ideas with optimal safety and maximum play value.

To help you visualise your ideas and find the perfect design for your playground together, our creative professionals produce high-quality renderings before the construction phase. Even our standard products can be customised according to individual wishes and adapted to the geographical environment. Let your imagination run wild!

In addition to the Berliner Creative Center, which is based at the headquarters in Berlin, there is a planning and design department exclusively for the American market – Berliner Creative Center USA in Greenville, South Carolina.

Our playground equipment has already won several Red Dot Design Awards and the German Design Award.



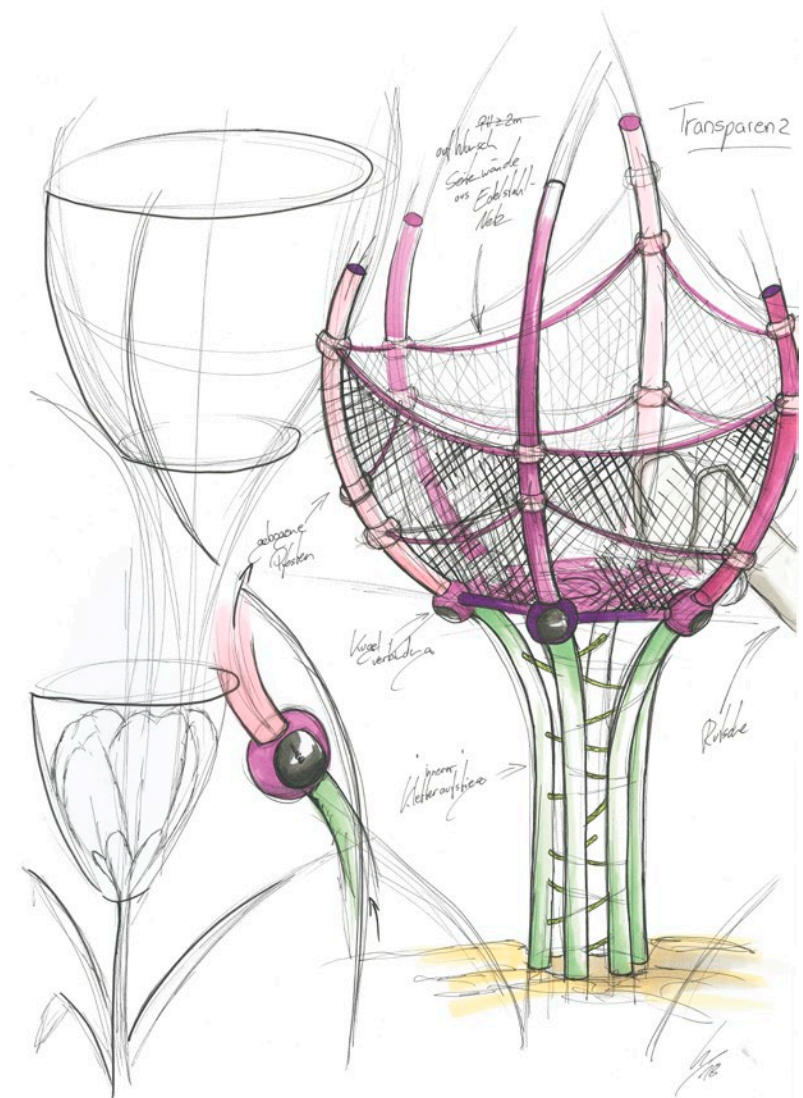
Berliner
Creative Center
USA



Berliner
Creative
Center



"We create something completely unique. It's often the case that the landscape or themed world for which the structure is to be created ensures a design that cannot be replicated elsewhere."



Nygårdsparken

Bergen, Norway



A well-balanced, natural colour concept allows the structure to blend in wonderfully with the prevailing tree population. The bamboo panels support this style as well. A total of 13 different climbing towers are connected via net tunnels and wind their way up a densely vegetated slope for more than 60 metres.



Photos: © UNIQIA AS



Lyttopia

Crete, Greece



Located in the 5-star family resort Lyttos Beach Hotel, the inclusive playground Lyttopia offers fun for children of different abilities and all ages. The highlights of the playground are the combination of the 7.5-meter-high centre mast structure PentaBoo and further playhouses connected via net tunnels as well as the two interconnected DNA Towers.



Photos: © Elite Areas





Waldwipfelweg

St. Englmar, Germany

This project shows the alternate ascent up a tower through net tunnels, bridges and arches playfully connecting six levels up to the viewing platform. The 10-metre-high DNA Tower winds up and almost sticks out of the tower with its posts. Two planar nets at the highest point of the steel tower grant a view of 52 metres into the depths.



Városliget

Budapest, Hungary

One of the most modern and versatile playgrounds in Europe has been created on an area of 13,000 m², consisting of a total of over 50 different play structures. At the centre of this extraordinary playground, there is a hot air balloon, which was specially developed for the client. This structure is 14 metres high and has a huge spatial net inside.

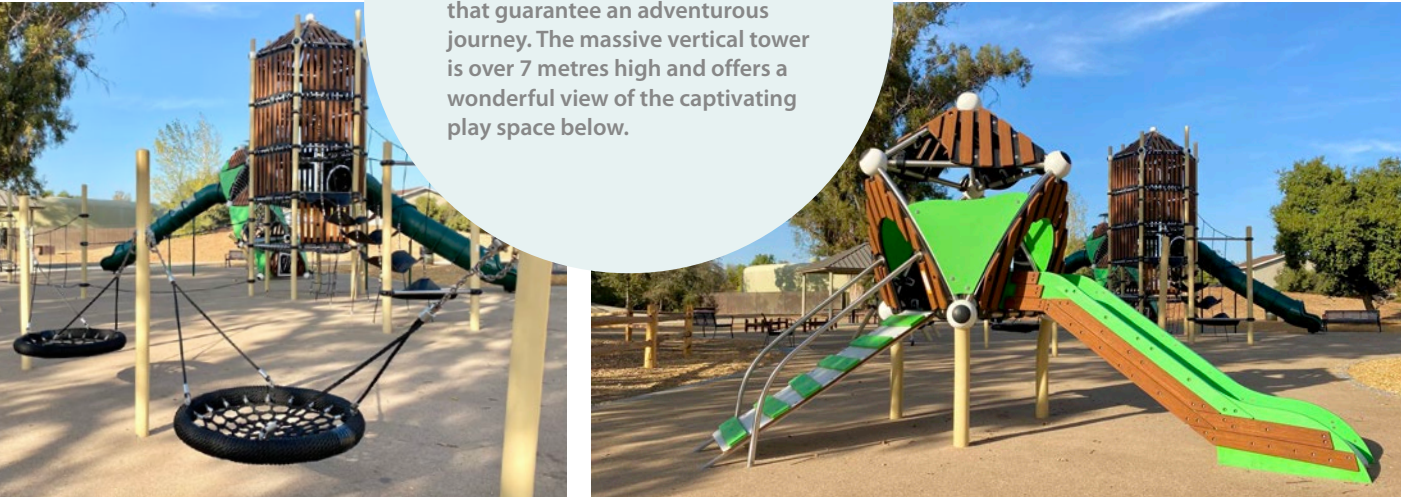


Sunset Park

Livermore, USA



This unique playground features an exciting climbing tower, a magical and award-winning Triitopia and many more climbing components that guarantee an adventurous journey. The massive vertical tower is over 7 metres high and offers a wonderful view of the captivating play space below.



Photos: © Specified Play Equipment Co.



Cosmodrome

Genk, Belgium



This multifaceted playground attracts attention due to its circular shape and bright colour. A wide variety of play functions, such as climbing, swinging, rocking, sliding and balancing, help the kids to let off steam. Of course, there is also plenty of room to relax.





Central Park West

Huntington Beach, USA

This spectacular structure is over 80 metres long and can be climbed from one end to the other in one go! Two big spatial nets, one long net tunnel, a rubber Chessboard Cube, two parallel Speedways and lots of smaller climbing elements provide gigantic fun for all neighbouring kids.

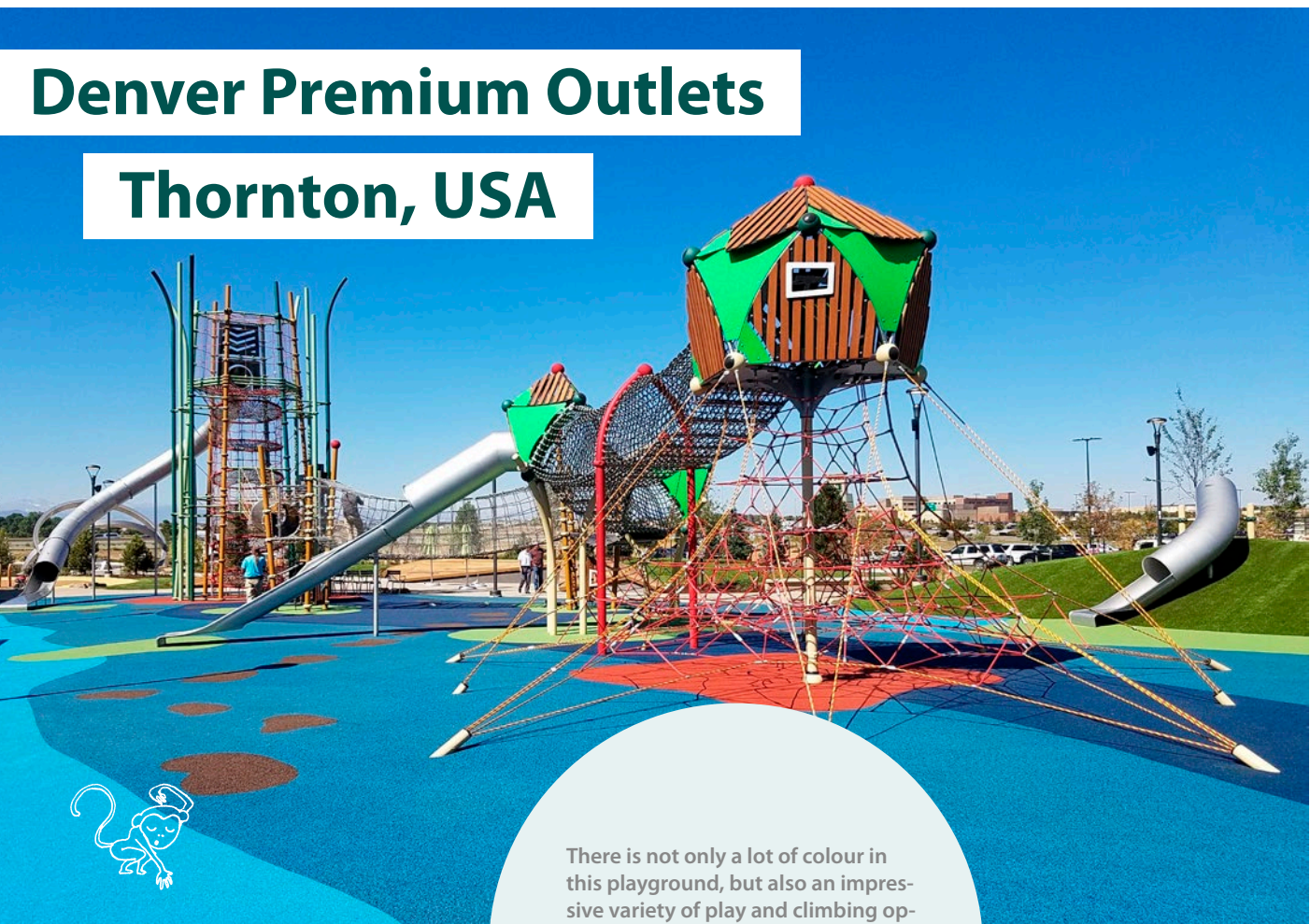


Ludwig-Lesser-Park

Berlin, Germany

The highlight of this playground is the 10-metre-high Tritopia climbing tower, which also provides enough space for resting. Smaller children can have fun together with their friends on the rotating play point O'Tannebaum or can climb close to the ground on the low rope course.



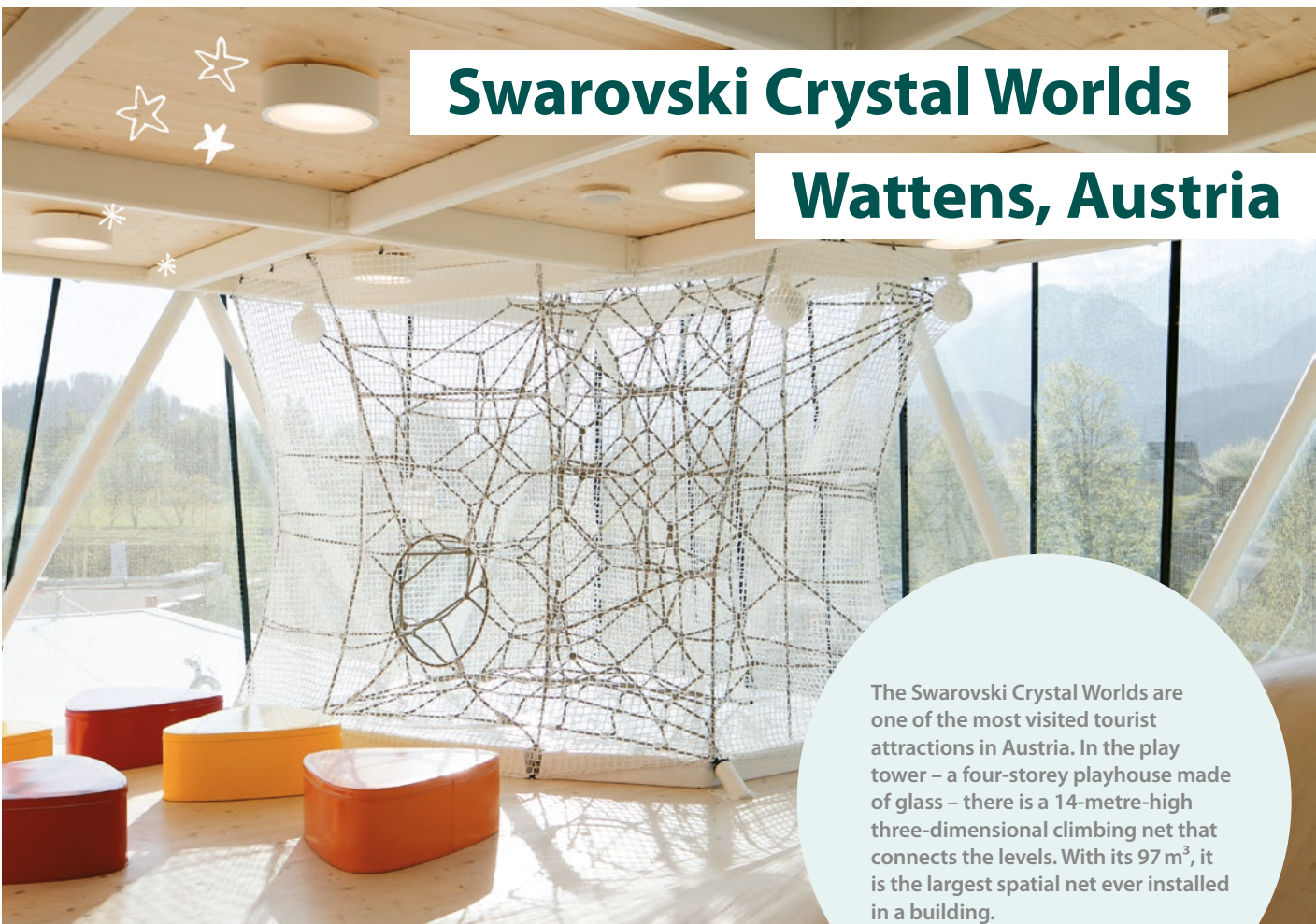


Denver Premium Outlets

Thornton, USA



There is not only a lot of colour in this playground, but also an impressive variety of play and climbing options. A high tower, little treehouses connected via net tunnels, two different slides, two types of spatial nets and a planar net will definitely keep the kids in motion.



Swarovski Crystal Worlds

Wattens, Austria

The Swarovski Crystal Worlds are one of the most visited tourist attractions in Austria. In the play tower – a four-storey playhouse made of glass – there is a 14-metre-high three-dimensional climbing net that connects the levels. With its 97 m³, it is the largest spatial net ever installed in a building.

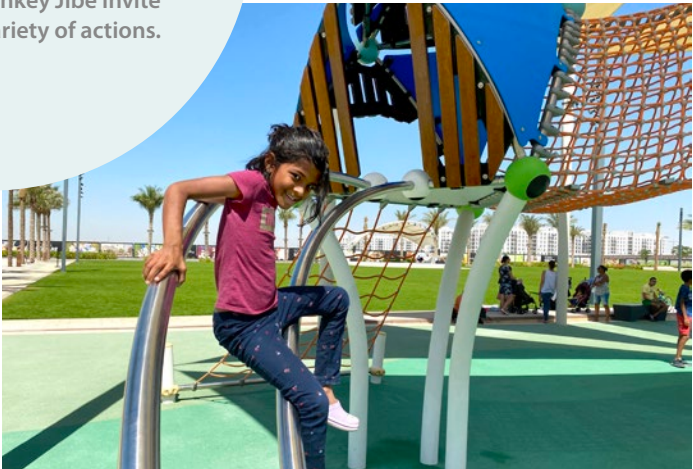


Town Square Park

Dubai, UAE



This playground is a great place for kids to spend hours. Two Greenville Combis with several treehouses for different age groups, diverse swings such as Swingo, Palmetto Saucer and VIP Swing and other play points such as Freeride and Monkey Jibe invite the children to a variety of actions.



Park Sasinkova

Malacky, Slovakia



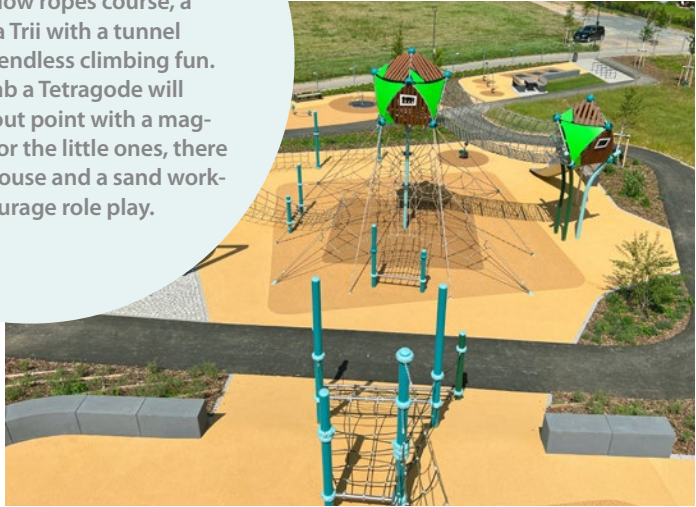
This modern playground was built right next to the local sports complex in Malacky so that children can not only exercise but also play in between. The absolute highlight is the Cube L, which impresses with its combination of spatial net, futuristic design and natural wood material.





Quellenpark

Bad Vilbel, Germany



This inclusive playground offers numerous play and exercise options for children of all ages. The CombiNation, consisting of a low ropes course, a PentaBoo and a Trii with a tunnel slide, provides endless climbing fun. Those who climb a Tetragode will reach the lookout point with a magnificent view. For the little ones, there is a Spoo playhouse and a sand workshop that encourage role play.



Rathenauplatz

Cologne, Germany



This CombiNation consisting of the Shout structure and the large DNA Tower adorns Rathenauplatz in Cologne. Everything can be climbed through in one piece. The large planar net stretched between the curved tubes looks like a hilly landscape. Two nest swings and a chessboard bridge complete the adventure.



Wilder Bluff Park

Shawnee, USA

For their new city park, the community wanted an all-access playground that allows kids to get “into the trees” and experience nature. We were able to design this play space utilizing the existing topography. On the upper area, more play elements are accessible to everyone.



Skopje City Mall

North Macedonia

This recreational park in front of Skopje City Mall is a gift from the shopping centre for Skopje. The main attraction of the playground is an amazing CombiNation of two DNA Towers and a Twist with various add-on components. The bright and vibrant colours increase children’s interest in activity and movement.





German International School

Singapore

This private school is aimed at pupils and preschoolers of all ages and sees breaks as an opportunity to supplement and support cognitive learning in the classroom with physical activity. There are three Greenville Combis consisting of playhouses and rope playhouses, connected by different bridges. The wave-shaped Shout includes numerous add-ons such as climbing plates, a banister and rubber mats.



Karl's Adventure Village

Elstal, Germany

This 13.2-metre-high climbing tower with a 130 m³ spatial net inside is located near Berlin. Those who dare to climb up here can be rewarded with a rapid descent down the tunnel slide. In Karl's Potato Chip Restaurant, a unique playground awaits the visitors. Above the tables, four climbing potatoes hang from the ceiling at a height of over 3 metres.





Aventura

Medebach, Germany



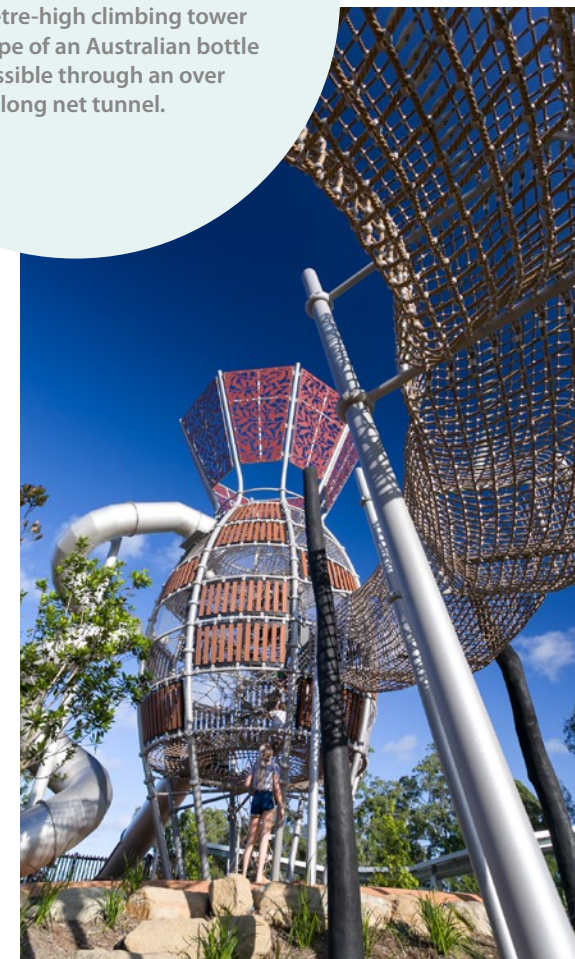
Europe's longest climbing facility begins at the foot of a mountain in Medebach. Over a length of 168 meters, a wide variety of tunnels and bridges, balancing elements and rubber mats wind their way up the mountain through various towers. The highest tower is 7.8 metres high. Lying on a viewing net on one tower, you can marvel at the beautiful landscape from above.



Bim'bimba Park

Greens, Australia

The intention for the park was to use the raw and natural beauty of the landscape to create an inspiring and communal play space. The highlight is a 14-metre-high climbing tower in the shape of an Australian bottle tree, accessible through an over 35-metre-long net tunnel.



Maintenance & Service

All play equipment of Berliner requires little maintenance and involves virtually no follow up costs. Thanks to its robust construction, the play equipment is extremely durable. Therefore, we guarantee our products for a period of up to 15 years.

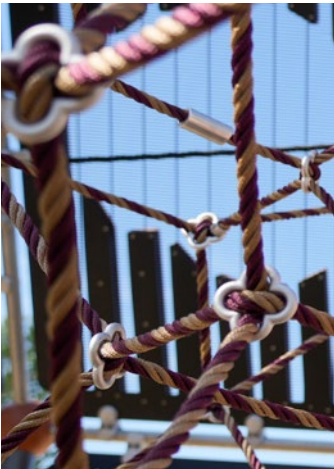
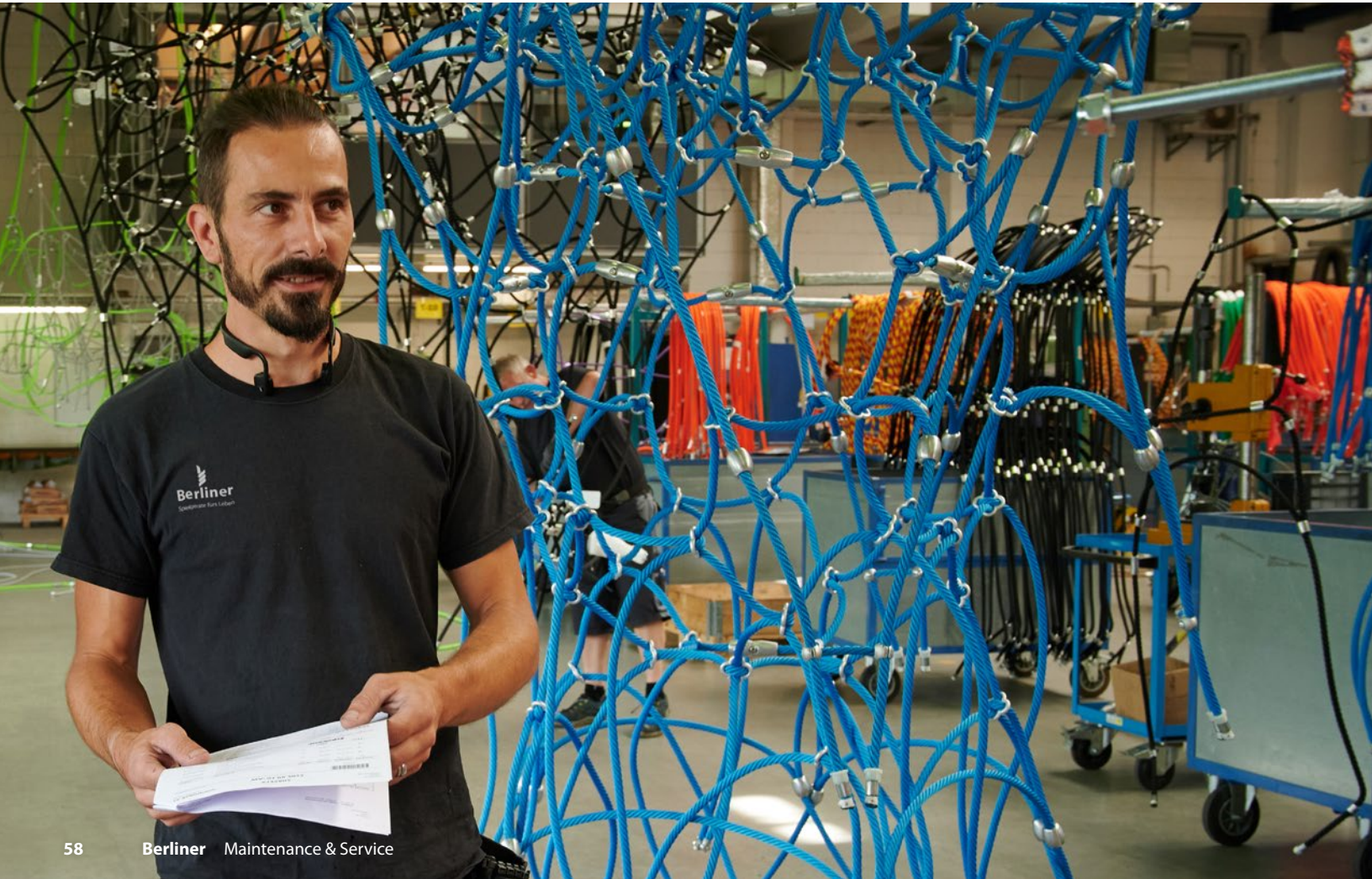
“Our comprehensive service accompanies you across all stages of development of your individual playground.”

High-quality cars must be inspected regularly, the same applies to high-quality play equipment in order to guarantee ongoing safety. For this purpose, our staff and authorised retailers are trained in the specific maintenance requirements of our products.

Proper installation and maintenance are conducted by our trained staff or an authorised dealer. If required, we are more than glad to assist you with self-mounting. If any problems arise, we will find the solution.



Installation Hotline: + 49 (0)172 8 41 76 89





Berliner Seilfabrik GmbH & Co.
Lengeder Straße 2/4
13407 Berlin

T + 49 (0)30 41 47 24 - 0
F + 49 (0)30 41 47 24 - 33

info@berliner-seilfabrik.com
www.berliner-seilfabrik.com

