

# LaGrange

Versatile Play Barn with numerous Climbing Elements





# Versatile Play Barn with numerous Climbing Elements: LaGrange

Our new product LaGrange is an impressive 5.6 metre high and 8.1 by 6.4 metre large play barn, which introduces the combination of various play cells with a spatial net. LaGrange belongs to the Greenville product line and is the largest playhouse in our product range. The posts inclined at 5 degrees and the partially open façade make the design of the play structure unique and arouse curiosity about the interior. Like the other playhouses in the Greenville product group, LaGrange is clad with bamboo panels. To give the playhouse the look of a real barn while creating more transparency, bamboo is combined with our innovative and transparent Joe's Grid. On request, the façade can be customised.

The diverse play elements inside ensure varied play and train different skills of the children. For example, the little climbers can enjoy net funnels with staggered HPL panels, rubber mats, hammocks, net tunnels and a large three-dimensional net. Play panels and slides can also be installed for even more fun.

Whether in a public or amusement park – LaGrange is an exciting attraction everywhere!



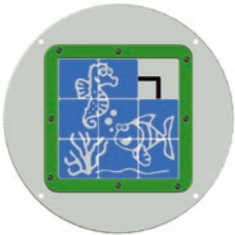
## Play Panels

The sensory-motor play panels on the façade increase the already enormous play value of the playhouse and support children in their motor and auditory development. In addition, they offer children with physical impairments the opportunity to participate in play.



### Solar Explorer

Like an astronaut, you can land the spaceships on the planets.



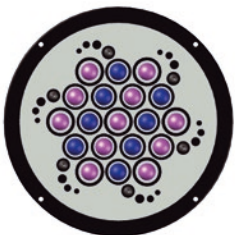
### Tile Slide Fish

The fish motif becomes visible when all parts are arranged correctly.



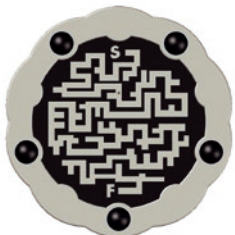
### Maze Slider

Left, right or straight ahead? Find the way to the centre of the maze.



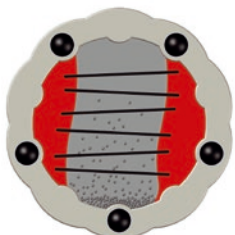
### Roller Ball

Touching the surface improves sensitive learning and sensory experience.



### Spin Maze

Move the ball with the spinning disc and find the exit of the maze.



### Make It Rain

When rotating the panel, the stainless steel balls sound like pattering rain.

## Slides

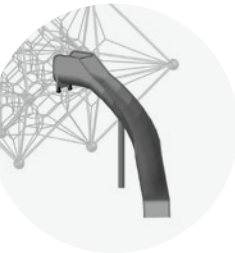
You can complement LaGrange with a fast-paced Spiral Tube Slide, a Curved Slide or a Fast Lane Slide made of HDPE and customised according to your theme.



### Spiral Tube Slide



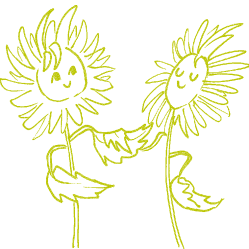
### Fast Lane Slide



### Curved Concave Slide



### Curved Tunnel Slide



Versatile  
Play Elements  
inside

## LaGrange

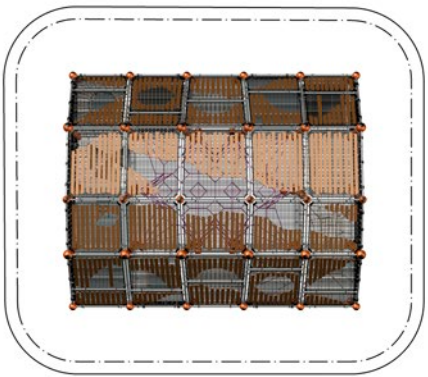
90.289.001

(m) 8,1 × 6,4 × 5,6  
(ft.) 26-5 × 20-8 × 18-4

EN 1176 (m) 10,5 × 9,1  
ASTM/CSA (m) 11,2 × 9,8  
ASTM/CSA (ft.) 36-6 × 31-11

EN 1176 (m) 1,53  
ASTM/CSA (ft.) 6-0

3





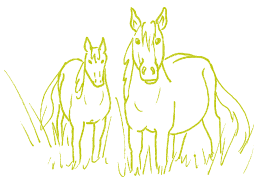
Technical Insights

LaGrange features numerous technical innovations and is the first play equipment to combine play cells with a spatial net. The three-dimensional net located in the centre of the barn is tensioned between the tubes using the Ball Connector and the integrated AstemTT® tensioning system. This innovative tensioning system simplifies installation, re-tensioning and maintenance of the spatial net and guarantees that all technical elements are kept inside the aluminium sphere and out of the reach of children's hands. The connecting element between the posts and tubes is the four-part, patented Polynode ball clamp, which fixes the horizontal tubes without screws. The newly developed Joe's Grid create transparency and fulfil the requirements of DIN EN 1176. Due to the bar spacing of 7.5 mm, there are neither finger traps nor the possibility of climbing on the façade. On request, Joe's Grid can be powder-coated in any RAL colour.



Bamboo Panels

Like the other play equipment in the Greenville product group, LaGrange is clad in bamboo panels, which give the playhouse a sense of value and naturalness.



Joe's Grid

The new innovative Joe's Grid provides the necessary safety and gives the barn a transparent look. There are no finger traps or opportunities to climb the façade.



Windows

The façade can be supplemented – like all Greenville play equipment – with windows in different sizes and shapes.



Posts

The inclined posts are continuous and enable the stability of the entire framework. The post diameter of 108 mm gives the unit an elegant look.



Polynode

The patented Polynode clamp consists of four parts and can be individually coloured. The horizontal tubes are held inside the Polynode without screws.



Play Panels

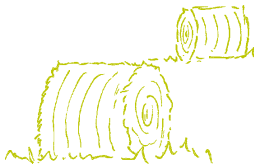
The sensory-motor play panels offer children a great additional adventure while training their motor and auditory skills. Because they are close to the ground, they are also easily accessible for children in wheelchairs.



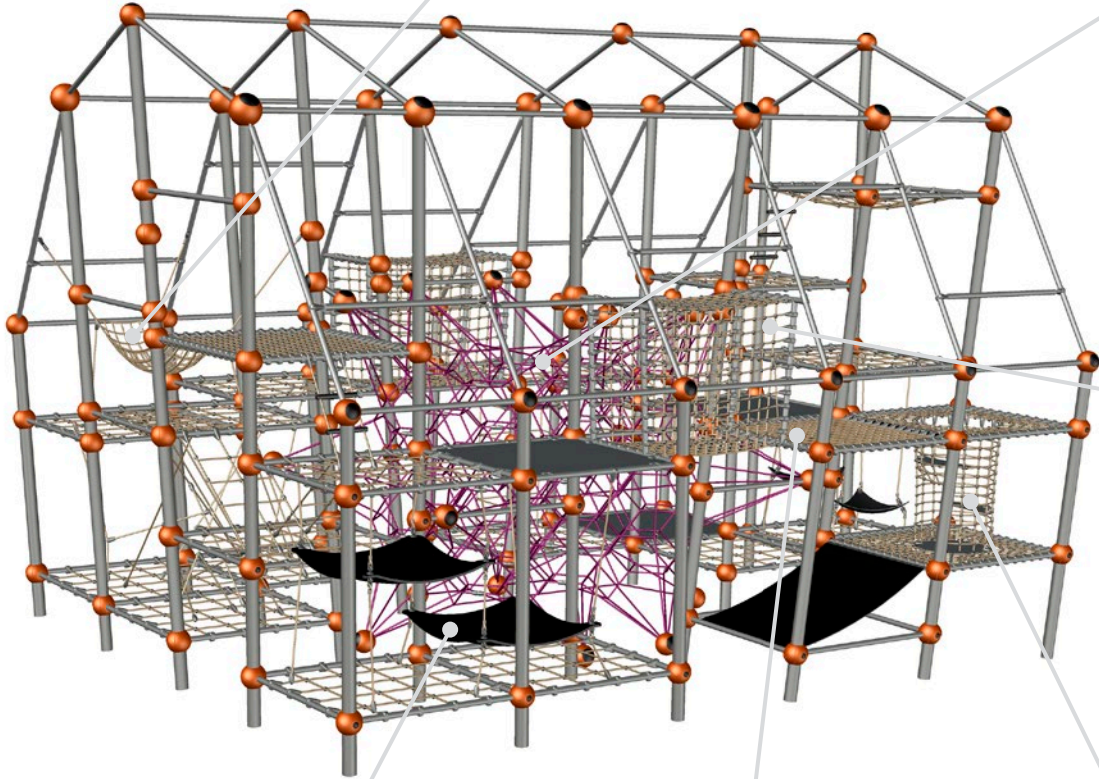
Diverse play elements fill the huge interior space of the barn and ensure maximum play fun.



Hammock



Spatial Net



Net Tunnel



Rubber Mats



Planar Net



Net Funnel





Berliner Seilfabrik GmbH & Co.  
Lengeder Straße 2/4  
13407 Berlin

T + 49 (0)30 41 47 24 - 0  
F + 49 (0)30 41 47 24 - 33

info@berliner-seilfabrik.com  
www.berliner-seilfabrik.com



Published: October 2023